

Project:	Catalogue #:	Type:
Notes:		

Product Description

The CRC series by Certolux is a specification-grade LED luminaire for Cleanroom applications. The overlapping single piece door design provides for a continuous seal to the sealed housing. The luminaire can be corner mounted is IP65 certified and vermin proof. NSF2 for Splash zone and non-food zones (See option X5 for Food Zone certification).

Feature Options

- Emergency LED Battery Pack
- Red LED Array

Housing

Precision formed, TIG welded, 18 gauge cold rolled steel housing. PEM studs are used in order to mount components.

Door Frame

One piece 60° beveled perimeter door frame, fabricated from 18 gauge, cold rolled steel with TIG welded corners. It is retained by stainless steel aircraft cable when opened. Specialized, military grade, flat head, stainless steel, captive fasteners with integral silicone o-rings easily secure door frame to housing through use of floating cage nuts. Silicone o-rings offer superior performance and longer life over comparable teflon bushings. Custom shaped, extruded closed cell silicone gasketing is used throughout to ensure precise, seals between door assembly and housing. Vulcanized corners ensure continuity of the seal on the frame gasket. Continuous retention-mounts mechanically secure and evenly distribute force against both gasketing and diffuser.

Lens & Lens Retention

The standard lens assembly is made with a tempered safety glass which is sealed to the door frame with silicone sealant and a pattern #12 acrylic lens overlay which is mechanically secured. Other lens options available. (see product ordering guide).

Finish

The luminaire is in a polyester powder painted white finish and offers a high reflectivitycoating for improved lighting performance and efficiency.

Electrical

Long life LED's coupled with high efficiency drivers provide quality illumination. Rated to deliver an L80 performance >50,000 hours. The standard driver comes standard lowvoltage dimming (0-10v, 1%). and has a THD of <10%. All electrical components are CSA or UL approved. A ½" EMT hole is provided for wiring connections.

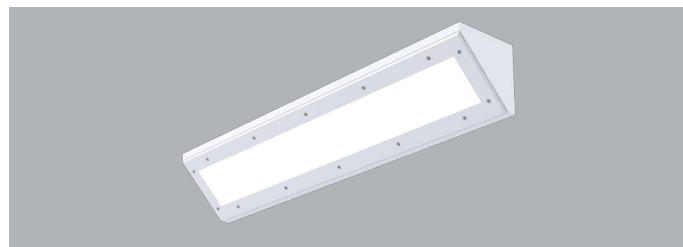
Warranty

5 year limited warranty. For complete warranty, click here:

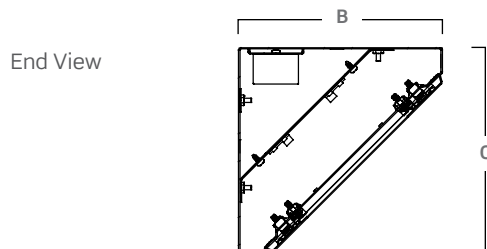
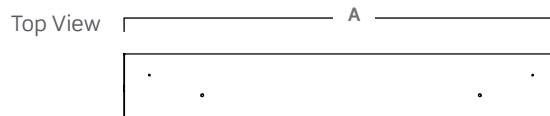


Approvals

- Approved to CSA and UL standards.
- ETL Certified to IEC 60529 IP65.
- NSF Listed (see ordering key).



Dimensions



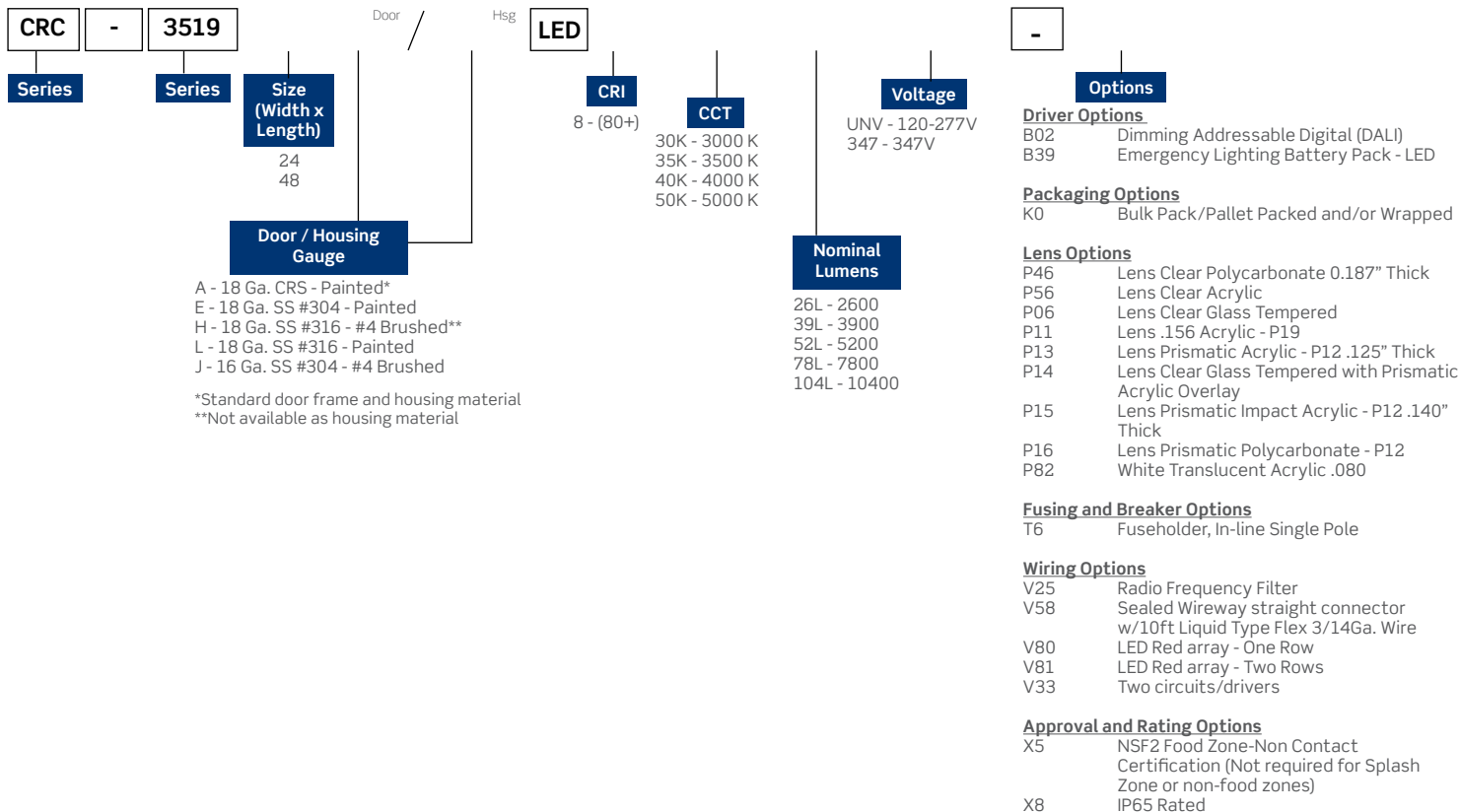
	A	B	C
24"	24"	7.75"	7.75"
48"	48"	7.75"	7.75"

Consult installation guide for exact dimensions.

Project:	Catalogue #:	Type:
Notes:		

Order Key

EXAMPLE: CRC-351924A/HLED840K26LUNV



Other options may be available, consult factory.
Specifications and data subject to change without notice.

Performance Data

Lumen & Watts		
Size	Nominal Lumens	Watts
24	2600	25
	3900	36
	5200	47
2x4	2600	25
	5200	47
	7800	75
	10400	98

Red LED Array - Lumen & Watts			
Size	Rows of LED	Lumens	Watts
24	1	1020	27
	2	2045	54
2x4	1	2045	54
	2	4090	108