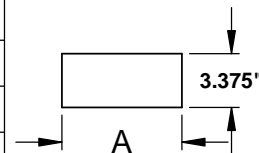


WARNING: ELECTRICAL SHOCK POTENTIAL !! DO NOT ATTEMPT TO INSTALL, MAINTAIN OR RELAMP WITHOUT DISCONNECTING ALL POWER, FAILURE TO DISCONNECT POWER CAN RESULT IN ELECTROCUTION, SHOCK OR SEVERE BURNS. ONLY QUALIFIED PERSONNEL TO CONDUCT ELECTRICAL INSTALLATION.

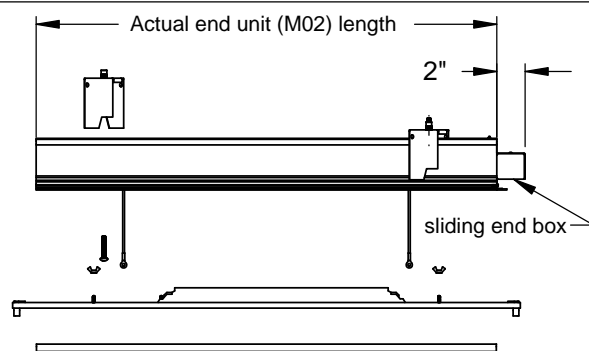
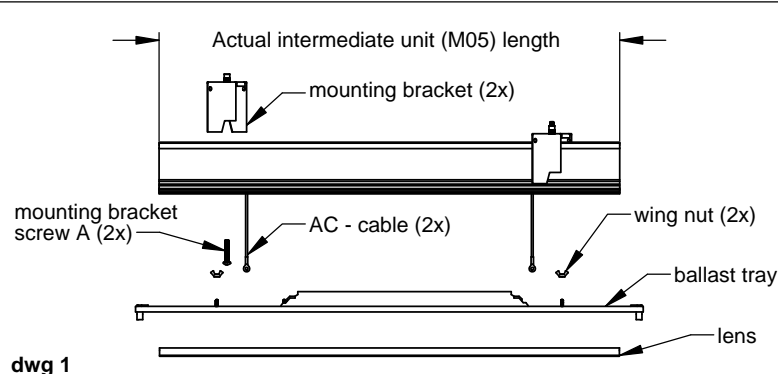
DRYWALL (SHEETROCK) CEILING OR WALL INSTALLATION INSTRUCTION:

DRYWALL (SHEETROCK) CEILING OR WALL OPENING:

Light source	14WT5 or 24WT5HO	21WT5 or 39WT5HO	28WT5 or 54WT5HO	21WT5 or 39WT5HO	28WT5 or 54WT5HO	21WT5 or 39WT5HO	28WT5 or 54WT5HO
Nominal unit length	2ft	3ft	4ft	6ft	8ft	9ft	12ft
Actual end unit length (M02)	18.656"	30.437"	42.280"	60.156"	83.780"	89.843"	125.280"
Actual intermediate unit length (M05)	17.875"	29.687"	41.500"	59.375"	83.000"	89.062"	124.500"



Drywall (sheetrock) ceiling or wall opening length **A** is equal to individual unit or row length plus **0.125"**.



step 1:
Disconnect power.

step 2:
Remove lens and ballast tray (detach AC-cable from ballast tray) on all units (dwg1).

step 3:
On end of the row units (2 per each row) loosen screw that holds end sliding box and push box inside the fixture (dwg 2).

step 3:
Install mounting brackets (2x) on all units with screws A (dwg 3).

step 4:
Bring power through 7/8" KO on top of the first fixture (end unit).

step 5:

Insert fixture into the ceiling / wall opening (for opening size refer to table provided). Begin and finish with end of the row unit.

step 6:
Secure fixture to ceiling / wall by tightening mounting bracket screws A (2x) until fixture flange is flush with ceiling / wall and for end of the row units slide end boxes outwards into original position and tighten end box screws.

step 7:
Insert 2 joiner pins (provided) (dwg 4). Install next fixture (intermediate unit) into the ceiling / wall opening and slide onto joiner pins to align fixture housings.

step 8:
Insert 1/4-20x2.000 carriage bolt and tighten the nut until fixtures are firmly attached (dwg 5).

step 9:
Secure intermediate unit to ceiling / wall by tightening mounting bracket screws A (2x) until fixture flange is flush with ceiling / wall.

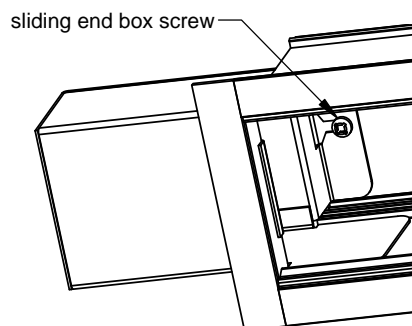
step 10:
Repeat steps 7 to 9 and add end of the row unit to complete the row.

step 11:
Hang ballast trays using AC-cables and wing nuts (provided).

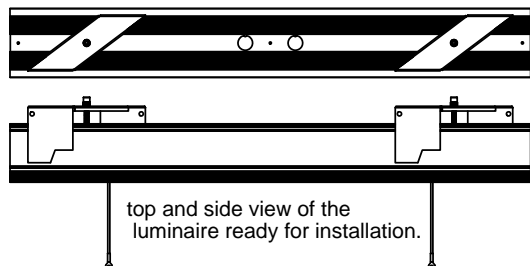
step 12:
Make wiring connections according to local electrical code and insert and secure ballast trays into the fixture.

step 13:
Insert proper lamps (supplied by others) and snap in lenses.

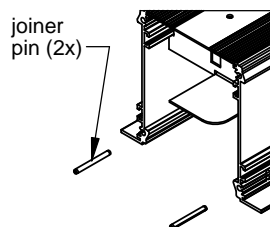
step 14:
Connect power.



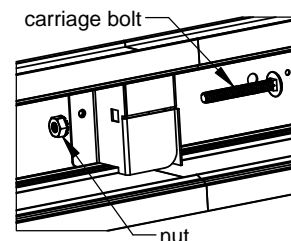
dwg 2



dwg 3



dwg 4



dwg 5