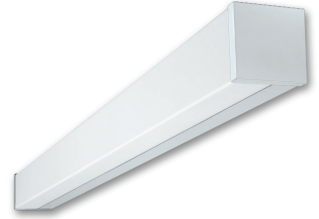


Premium-Grade Surface-Mounted Cube Light With Opal Lens Retained By Spring Loaded Ends

Project
Type
Date
Cat #

Application Features

Premium-grade, surface-mounted ceiling/wall luminaire. For use with indoor applications where low-glare illumination is required. End caps are spring loaded for a clean look and allow for easy access to fixture for servicing or relamping.



Specifications

Optical System

Standard diffuser is soft matt white opal acrylic designed for even and low-glare illumination.

Mounting

Mounting holes are provided. Mounts over electrical junction box.

Construction

Die and brake-formed, heavy-gauge steel housing assembly. Spot-welded for rigidity and clean appearance. End-caps are spring loaded.

Finish

White, polyester powder painted housing. High-reflective coated surface for improved efficiency.

Electrical

Rotary lampholders ensure positive lamp retention. Sufficient knockouts are provided for connections and through wiring.

Approvals

Approved to CSA and UL standards.

Features

- Heavy-duty construction
- Available with 1 or 2 lamps (T5 and T8 configurations)
- Easy re-lamping and re-ballasting
- Row-mountable (requires a joiner bracket)
- Soft matt white opal acrylic wrap-around diffuser

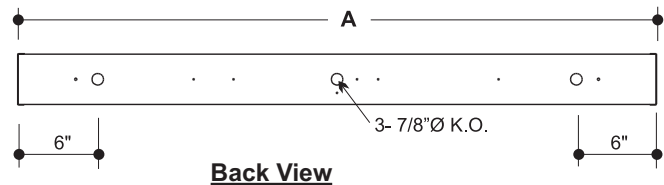
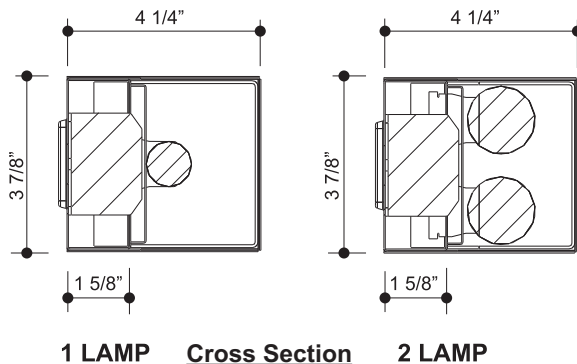
Options & Adders

- Multi-level switching
- Dimmable and Emergency ballast
- Radio interference filter (120V - 277V)
- Prismatic acrylic overlay
- Convenience outlet
- Pull chain switch

Applications

- Corridors
- Utility Areas
- Vanities

Dimensions



MODEL			
1 LAMP	2 LAMP	NOMINAL LENGTH	Length A (in.)
115	215	15"	15 1/16"
118	218	18"	18 1/16"
124	224	24"	24 1/16"
136	236	36"	36 1/16"
148	248	48"	48 1/16"

