

Project
Type
Date
Cat #

Application Features

Premium-grade, wall-mounted valance luminaire. For use with indoor applications where low-glare illumination and ease of installation is required. Metal fascia provides bi-directional lighting.



Specifications

Optical System

Standard diffuser is soft matt white opal acrylic designed for even and low-glare illumination. Optional Housing Double Fascia to control up or down light.

Mounting

Mounting holes are provided. Mounts over electrical junction box.

Construction

Die and brake-formed, heavy-gauge steel housing assembly. Spot-welded for rigidity and clean appearance. End-caps are spring loaded for a clean look and for easy access to the fixture during relamping or servicing.

Finish

White, polyester powder painted housing. High-reflective coated surface for improved efficiency.

Electrical

Rotary lampholders ensure positive lamp retention. Sufficient knockouts are provided for connections and through wiring.

Approvals

Approved to CSA and UL standards.

Features

- Heavy-duty construction
- Available with 1 or 2 lamps (T5 and T8 configurations)
- Easy re-lamping and re-ballasting
- Soft matt white opal acrylic wrap-around diffuser

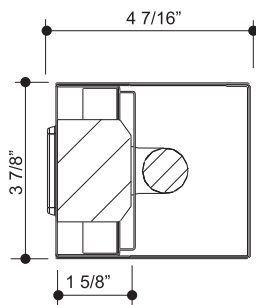
Options & Adders

- Multi-level switching
- Dimmable and Emergency ballast
- Radio interference filter (120V - 277V)
- Convenience outlet
- Three-way pull chain switch
- Pull chain switch
- Housing Double Fascia

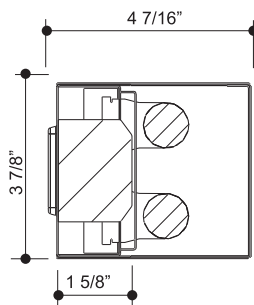
Applications

- Chronic Care Facilities
- Corridors
- Nursing Homes
- Stairwells
- Utility Areas

Dimensions

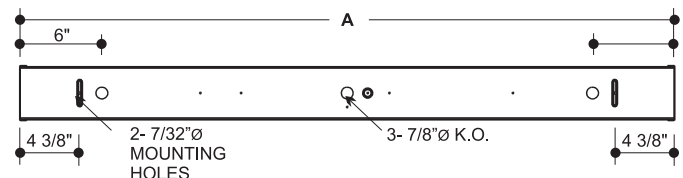


1 LAMP



2 LAMP

CROSS SECTIONS



BACK VIEW

MODEL			
1 LAMP	2 LAMP	NOMINAL LENGTH	A
115	215	15"	15 1/16"
118	218	18"	18 1/16"
124	224	24"	24 1/16"
136	236	36"	36 1/16"
148	248	48"	48 1/16"

