

Project
Type
Date
Cat #

## Application Features

Premium-grade, fluorescent strip luminaire. For use with indoor applications where low-cost, but industrial-grade ruggedness is required. This luminaire's socket bar flips up for easy installation. Converts to raceway for continuous row-mounting.



## Specifications

### Mounting

Mounting holes are provided. This product can be surface, chain or stem-mounted. Optional V (Speedy) hangers accommodate chain (not provided).

### Construction

Die and brake-formed, code gauge, pre-painted white steel. Knockouts are provided for conduit attachment. Screw-fastened end plates can be repositioned to serve as joiners for continuous row-mounting, thus forming a continuous, uninterrupted wireway. Single wireway cover on non-tandem units.

### Finish

Pre-painted, high-reflectance white housing.

### Electrical

Rotary lampholders ensure positive lamp retention. Sufficient knockouts are provided for connections and through wiring.

### Approvals

Approved to CSA and UL standards.

## Features

- Available with 1, 2 or 3 lamps (T8 and T12 configurations)
- Available in lengths from 15 to 96 inches
- Flip-up socket bars

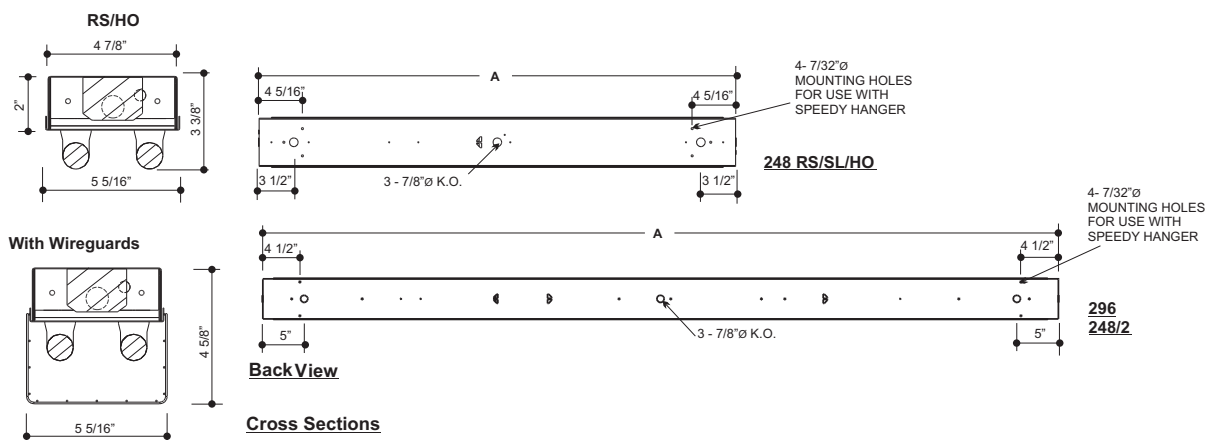
## Options & Adders

- Dimmable and Emergency ballast
- Heavy-duty wireguards with powder coated white finish and comes with mounting hardware
- Light duty wireguards are available in zinc (standard) or a powder coated white finish with mounting hardware
- 20 gauge riveted construction
- Pull chain, Toggle and Turn switch

## Applications

- Storage Areas
- Manufacturing Areas
- Parking Garages
- Stairwells
- Utility Areas
- Valances
- Warehouse Areas

## Dimensions



MODEL	LENGTH A (in.)
218	18
224	24
236	36
236/2	72
248	48
248/2	96
248/36	84
260	60
272	72
296	96

## COM2

### Commercial Two Lamp

Premium-Grade Two Lamp Fluorescent Strip Luminaire



## Ordering

