



Project
Type
Date
Cat #

Application Features

Premium-grade, T5 fluorescent strip luminaire. For use with indoor applications, where compact design, high-performance and ease of installation are required (such as display cabinets).

Specifications

Mounting

Mounting holes are provided. This product can be surface, chain or stem-mounted and also a continuous raceway and row-mounting capability.

Construction

Die and brake-formed, code gauge, pre-painted white steel. One-piece folded construction. This luminaire is suitable for row-mounting. Knockouts are provided for conduit attachment.

Finish

Pre-painted, high-reflectance white housing.

Electrical

Rotary lampholders ensure positive lamp retention. Sufficient knockouts are provided for connections and through wiring.

Approvals

Approved to CSA and UL standards.

Features

- Available with 1 or 2 lamps (T5 configurations)
- Available in lengths from 22 to 58 inches
- Ballasts and lampholders are replaceable without removing the luminaire from the mounting surface

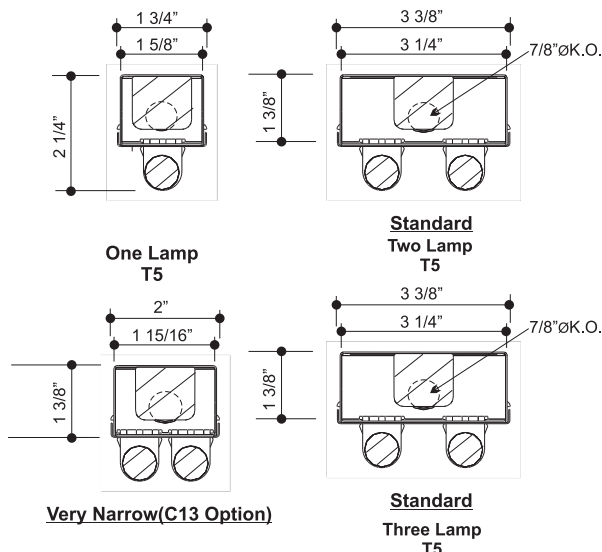
Options & Adders

- Dimmable and Emergency ballast
- Light-duty wireguards, comes with mounting hardware in powder coated white finish
- 20 gauge riveted
- Convenience outlet
- Individual and custom packaging (select models only)
- Pull chain, Toggle or Turn switch

Applications

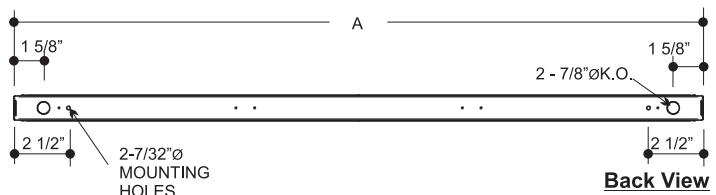
- Coves
- Display Cabinets
- Task Lighting
- Valances

Dimensions



MODEL CONFIGURATION		Nominal Length	Actual Length
One Lamp	Two Lamp		A (in.)
122	222	2'	22 7/16
134	234	3'	34 1/4
146	246	4'	46 1/16
158	258	5'	57 7/8

Cross Sections



FCOM
Five Commercial T5
Premium-Grade T5 Fluorescent Strip Luminaire



Ordering



INDUSTRIAL/COMMERCIAL LIGHTING