

Project
Type
Date
Cat #

## Application Features

Specification-grade, ultra-low-profile T5 fluorescent strip luminaire. For use with indoor applications, where compact design, high-performance and ease of installation are required (such as display cabinets).



## Specifications

### Mounting

Mounting holes are provided. This product can be surface-mounted. Continuous raceway and row-mounting capability.

### Construction

Die and brake-formed, code gauge, pre-painted white steel. One-piece folded construction. This luminaire is suitable for row-mounting.

### Finish

Pre-painted, high-reflectance white housing.

### Electrical

Rotary lampholders ensure positive lamp retention. Sufficient knockouts are provided for connections and through wiring.

### Approvals

Approved to CSA and UL standards.

## Features

- Available with 1 or 2 lamps (T5 configurations)
- Available in lengths from 22 to 58 inches
- Ballasts and lampholders are replaceable without removing the luminaire from the mounting surface

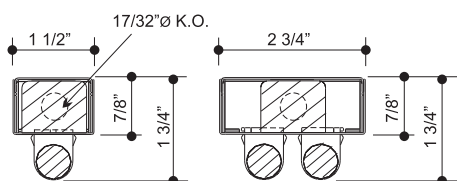
## Options & Adders

- Dimmable and Emergency ballast
- Light duty wireguards are available in zinc (standard) or a powder coated white finish and comes with mounting hardware
- 20 gauge riveted
- Feed connector with reducer for 1/4 inch KO (17/32 inch opening)
- Remote ballast box
- Pull chain, Toggle or Turn switch

## Applications

- Coves
- Display Cabinets
- Task Lighting
- Under Counters
- Valances

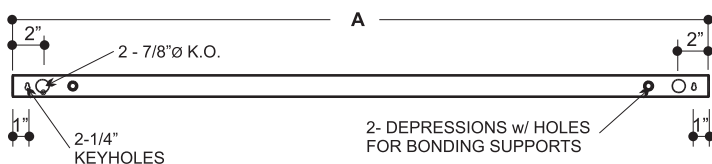
## Dimensions



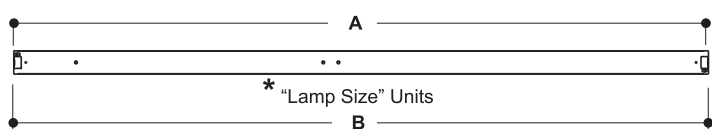
One Lamp T5

Two Lamp T5

### Cross Sections



Back View



Back View

MODEL CONFIGURATION		Nominal Length	Actual Length
1 Lamp	2 Lamp		A (in.)
122	222	2'	22 7/16
134	234	3'	34 1/4
146	246	4'	46 1/16
158	258	5'	57 7/8

