

Project
Type
Date
Cat #

Application Features

Premium-grade high or low bay luminaire. For use with indoor applications where high-efficiency and ease of installation are required. This luminaire mounts easily with hook and cord (standard 84-in cord provided) and its reflector design provides a more uniform and broader light distribution making it ideal as an HID retrofit or replacement.



Specifications

Optical System

Solid white reflectors are standard. Optional reflectors are available with a slotted uplight component in specular aluminum with a minimum reflectance of 95% and/or with an uplight component.

Mounting

Hardware is provided for hook-mounting. Optional deck mounting assembly to be used wherever uniform fixture alignment within rows is critical. Ideal for new and retrofit installations.

Construction

Die-formed, code gauge pre-painted, high-reflectance white steel housing.

Electrical

Rotary lampholders ensure positive lamp retention. Sufficient knockouts are provided for connections and through wiring.

Approvals

Approved to CSA and UL standards.

Features

- Replaces 250, 400, 1000 watt HID luminaires
- Up to 50% energy savings compared to equivalent metal halide luminaire
- Symmetric light distribution
- Available in 3, 4, 6, 8, 9 or 12 lamps in 3 or 4 wing configurations
- 92% high-performance white aluminum reflector is standard
- Easy installation - hook or mounting channel assembly
- Available in T5 configurations

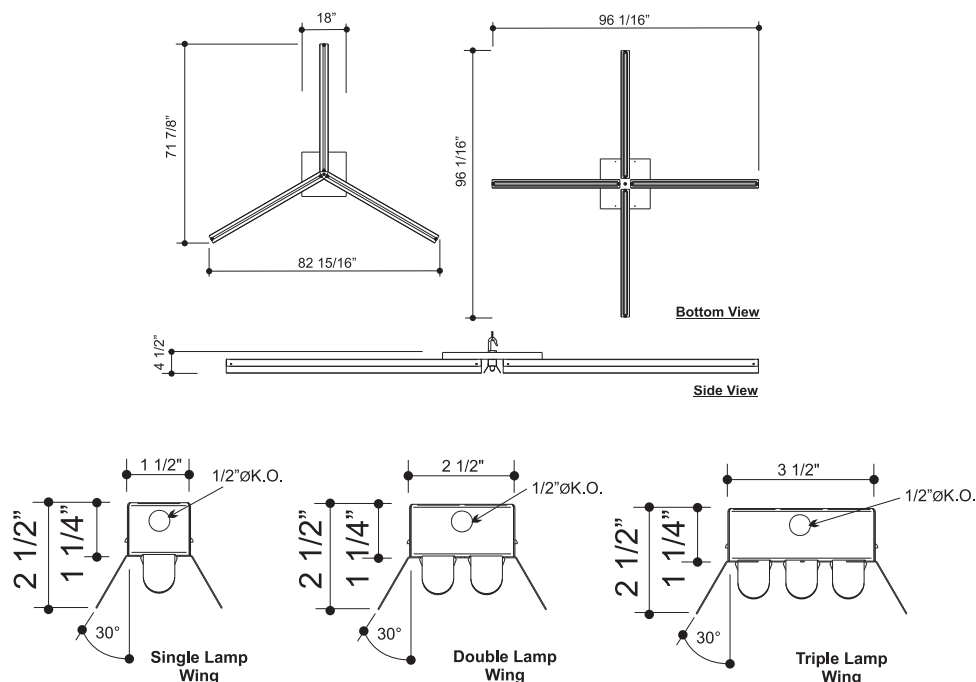
Options & Adders

- Emergency ballast
- Radio interference filter (120V - 277V)
- Deck plate mounting assembly

Applications

- Athletic Centers
- Manufacturing and Warehouse Areas
- Multi-Purpose Rooms
- Retail Stores and Supermarkets

Dimensions



Project
Type
Date
Cat #

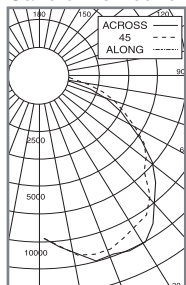
FHBS Fluorescent High Bay S

Premium-Grade Suspended Winged-Configuration Uniform
Light Distribution Hook-Mount HID Retrofit Luminaire With
Uplight Component



Photometrics - FHBS346T5-T4HO54PUNV-VF1 - Efficiency 87.5%

Candle Distribution



Luminance Summary-CD. / SQ. M.

ANGLE	ALONG	45	ACROSS
45	2615	2685	2912
55	2751	2558	2704
65	2682	2384	2566
75	2902	2104	2294
85	3296	1388	1319

Candle Power Summary

ZONE	LUMENS	% LAMP	% LUMINAIRE
0 - 30	5500	20.84	29.46
0 - 40	9139	34.62	48.94
0 - 60	15661	59.32	83.87
0 - 90	18674	87.5	100.00
40 - 90	9535	36.12	51.06
60 - 90	3013	11.41	16.13
90 - 180	0	0.00	0.00
0 - 180	18674	70.74	100.00

Ordering

FHBS				-								Options
Typical Number Of Lamps In Cross Section 1 2 3		Nom. Length (inches) 46 Tandem T3 - Three Housings T4 - Four Housings		Lamp Watts See table below		Lamp Type T5 T5HO		Voltage 120 - 277V 347 - 347V UNV - 120 - 277V UN4 - 347 - 480V		Ballast Options (See Option Code Section For More Information) <input type="checkbox"/> B30 Emergency Lighting Battery Pack Spec Grade <input type="checkbox"/> B33 Emergency Lighting Battery Pack 1-lamp <input type="checkbox"/> B34 Emergency Lighting Battery Pack 2-lamp		
						Ballast Type N - Instant Start P - Program Start R - Rapid Start				Mounting Options <input type="checkbox"/> M35 Deck Plate Ribbed Square <input type="checkbox"/> M41 Deck Plate Flat Square (places over junction box)		
										Reflector Options (Solid Full White Reflector Is Standard) <input type="checkbox"/> R02 Slotted White Reflector (92% Reflectance) <input type="checkbox"/> R05 Slotted Full White Reflector (92% Reflectance) <input type="checkbox"/> VF1 Solid Full Specular Aluminum Reflector (95% Reflectance) <input type="checkbox"/> VF3 Slotted Full Specular Aluminum Reflector (95% Reflectance)		
										Approval and Rating Options <input type="checkbox"/> X7 Dual CSA/USA Market		

Example (6 Lamp):

FHBS246T3-T5HO54PUNV-B01M35VF1

Example (12 Lamp):

FHBS346T4-T5HO54PUNV-B01M35VF1

Lamp Watts

Length	Nominal Lamp Watts	
	T5	T5HO
48	28	54

Other options may be available consult factory.
Specifications and data subject to change without notice.