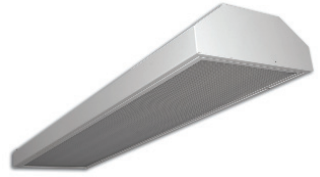


Project
Type
Date
Cat #

Application Features

Premium-grade high or low bay luminaire. For use with indoor applications where high-efficiency, high-performance and ease of installation are required. This luminaire's compact design, narrow beam light distribution makes it ideal as an HID alternative where a fastened lensed door frame is required.



Specifications

Optical System

CNC brake-formed, multi-faceted optimized reflector is available in a variety of finishes, materials and configurations. Specular aluminum reflector with a minimum reflectance of 95% is standard. The protective layer provided is to be removed during installation which ensures a clean, blemish-free reflective surface.

Mounting

Knockout is provided for stem-mounting (1/2 inch NPT rigid pipe). Optional stem and canopy sets are available in multiples of six inches. QuickInstall Option allows for pre-installation of wiring chamber on a single stem for easy and fast fixture hanging.

Construction

CNC brake-formed, code gauge steel housing and ends. Louvered ventilation openings are provided. Knockouts are provided for conduit attachment. Wireguard and/or lens are securely retained by rigid frame assembly.

Finish

Pre-painted white housing.

Electrical

Rotary lampholders ensure positive lamp retention. Sufficient knockouts are provided for connections and through wiring.

Approvals

Approved to CSA and UL standards.

Features

- Up to 50% energy savings compared to equivalent metal halide luminaire
- Replaces 250, 400 watt HID luminaires
- Available with 2, 3, 4, 5, 6 or 8 lamps (T5 and T8 configurations)
- Suitable for stem or chain mounting
- Door frame with standard prismatic or optional optically clear lens is available in polycarbonate or acrylic

Options & Adders

- Multi-level switching
- Dimmable and Emergency ballast
- Radio interference filter (120V - 277V)
- Deck plate mounting assembly
- Mounting bracket for single stem pendant mounting
- Speedy hangers
- Motion sensor and assembly

Applications

- Manufacturing and Warehouse Areas
- Multi-Purpose Rooms
- Retail Stores and Supermarkets

Dimensions

