



Project
Type
Date
Cat #

## Application Features

Premium-grade, side-mounted T5 fluorescent strip luminaire. For use with indoor applications where shallow design, high-performance, commercial grade ruggedness and ease of installation are required. It is ideal in restricted spaces that require open lamps.

## Specifications

### Mounting

Mounting holes are provided.

### Construction

Die and brake-formed, code gauge, pre-painted white steel. One-piece folded construction. This luminaire is suitable for row-mounting.

### Finish

Pre-painted high-reflectance white housing.

### Electrical

Rotary lampholders ensure positive lamp retention. Sufficient knockouts are provided for connections and through wiring.

### Approvals

Approved to CSA and UL standards.

## Features

- Available with 1 or 2 lamps (T5 configurations)
- Side-mounted lamps
- Available in lengths from 22 to 58 inches
- Continuous row-mounting capability
- Single-sided or double-sided units available

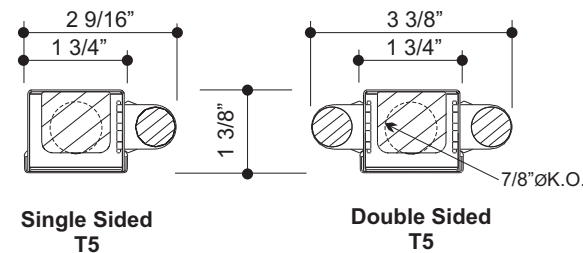
## Options & Adders

- Dimmable and Emergency ballast
- 20 gauge riveted construction
- Individual and custom packaging (select models only)
- Pull chain switch
- Toggle switch
- Turn switch

## Applications

- Display Cabinets
- Under Cabinets
- Task Lighting
- Coves
- Valances

## Dimensions



### Cross Sections

MODEL CONFIGURATION		Nominal Length	Actual Length
Single Sided	Double Sided		A (in.)
122	222	2'	22 7/16
134	234	3'	34 1/4
146	246	4'	46 1/16
158	258	5'	57 7/8

