

Project
Type
Date
Cat #

Application Features

Specification-grade, surface-mounted ceiling luminaire. For use with indoor applications such as in commercial recreational/ multi-purpose facilities. This luminaire is suitable for surface or suspended-mounting individually or in continuous rows.



Specifications

Optical System

Standard diffuser is a clear, prismatic pattern # 12, acrylic lens. Standard reflectors are solid and are coated with a durable, high- reflectance white finish. Optional reflectors are available in specular aluminum with a minimum reflectance of 95%.

Mounting

Mounting holes are provided.

Construction

Die-formed, code gauge steel. Narrow cell steel wireguard (1 x 4 inch). Spot-welded for rigidity and clean appearance. Flattened knockouts are provided on ends for through wiring. Wireguard and optional overlay is held within a rugged hinged door frame by retaining springs. Door frame is latched with captive fasteners.

Finish

White, polyester painted housing and wireguards. High-reflectivity coated reflecting surfaces for improved efficiency.

Electrical

Rotary lampholders ensure positive lamp retention. Sufficient knockouts are provided for connections and through wiring.

Approvals

Approved to CSA and UL standards.

Notes

Features

- Ideal for commercial recreation areas
- Shallow design
- Available with 2, 3, 4 or 6 lamps (T5,T8 and PLL/Biax configurations)
- Heavy-duty narrow cell (1 x 4) wireguard
- Surface, stem, or chain mountable
- Hinged frame retains wireguard with or without diffuser for easy maintenance
- Welded one-piece steel housing

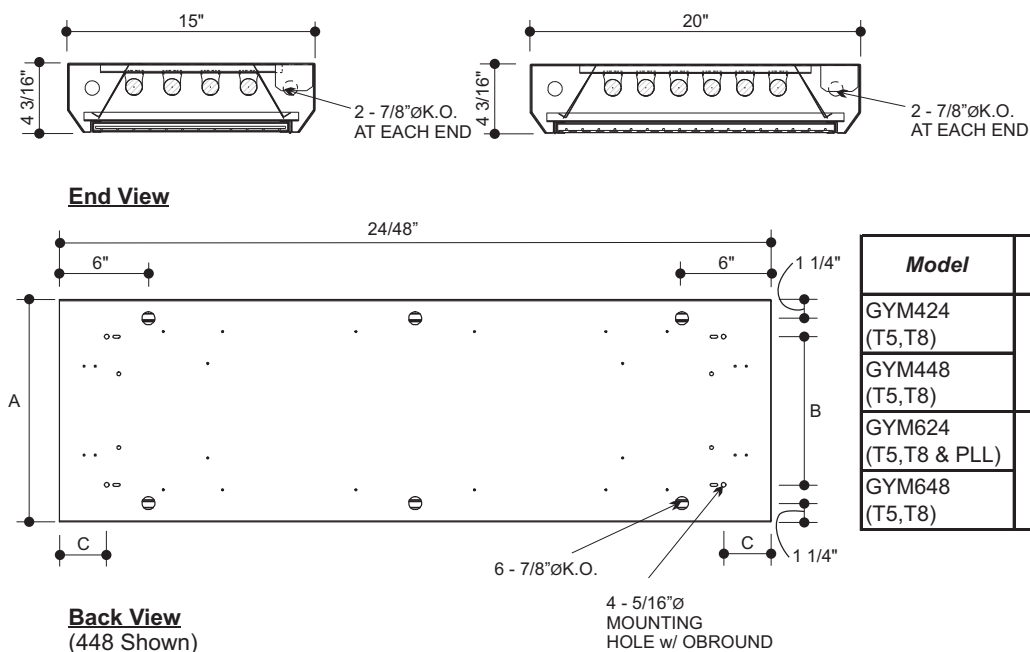
Options & Adders

- Enhanced specular aluminum reflector with a minimum reflectance of 95%
- Multi-level switching
- Dimmable and Emergency ballast
- Polycarbonate diffuser
- Prismatic acrylic diffuser

Applications

- Gymnasiums
- Locker Rooms
- Squash Courts

Dimensions



Project
Type
Date
Cat #

GYM Gymnasium

Specification-Grade Surface-Mounted Hinged Door Frame With Wireguard Luminaire



Photometrics - Please consult www.viscor.com for photometric results.

Ordering

GYM			-				-			Options
-----	--	--	---	--	--	--	---	--	--	---------

Typical Number of lamps in Cross Section

4 (15-in body)
Suitable only for 2L, 3L or 4L

6 (20-in body)
Suitable only for 4L, 6L or PLL/Biax lamps

Nom. Length (in.)

48

Lamp Watts
See table below

Lamp Type
T5
T5HO
T8
PLL/Biax

Voltage
120 - 120V
347 - 347V
UNV - 120-277V
UN4 - 347-480V

Ballast Type
N - Instant Start
P - Prog. Start
R - Rapid Start

No. of Lamps Option (in Cross Section)

2L - 2 lamps
3L - 3 lamps
4L - 4 lamps
6L - 6 lamps**

** (not available for PLL/Biax)

Tandem
(Blank) - N/A
/2 - Single Housing

Ballast Options

(See Option Code Section For More Information)

- ☐ B02 Dimming Addressable Digital (dali)
- ☐ B03 Dimming Low Voltage (0-10v)
- ☐ B04 Dimming Line Voltage
- ☐ B08 Ballast - High Ballast Factor
- ☐ B09 Ballast - Low Ballast Factor
- ☐ B30 Emergency Lighting Battery Pack Specification Grade
- ☐ B33 Emergency Lighting Battery Pack 1-lamp
- ☐ B34 Emergency Lighting Battery Pack 2-lamp

Packaging Options (select one only)

- ☐ K0 Pack Bulk/ Pallet Packed and/or Wrapped

Lens Options (select one only)

(Pattern 12 Prismatic Acrylic is Standard)

- ☐ P05 Clear Acrylic Lens (0.125-in Thick)
- ☐ P07 Lens Clear Polycarbonate
- ☐ P13 Lens Prismatic Acrylic - P12 - 0.125-in Thick
- ☐ P16 Lens Prismatic Polycarbonate - P12
- ☐ P45 Lens Clear Polycarbonate - .125" Thick

Reflector Options (white is standard)

- ☐ VF1 Reflector VF1 Solid Full (95% Reflectance) Specular

Wiring Options

- ☐ V31 Wiring 1-Switch Lead
- ☐ V33 Wiring 2-Switch Leads
- ☐ V35 Wiring 3-Switch Leads

Approval and Rating Options

- ☐ X7 Dual CSA and USA Market

Example:

GYM448-T528PUNV-B01P07

Lamp Watts

Length	Nominal Lamp Watts			PLL/Biax
	T5	T5HO	T8	
48	28	54	32	-

Other options may be available consult factory.
Specifications and data subject to change without notice.