

Project
Type
Date
Cat #

Application Features

Specification-grade, recessed, lay-in T-Bar with heavy-duty wireguard that is retained within a hinged door frame. For use with indoor applications such as in commercial recreational/ multi-purpose facilities.



Specifications

Optical System

Standard diffuser is a clear, prismatic pattern #12, acrylic lens. Optional reflectors are available in specular aluminum with a minimum reflectance of 95%.

Mounting

Lay-in type luminaire for exposed grid type acoustical ceiling structure. Holes provided for chain-mounting support to building structure.

Construction

Die-formed and embossed, code gauge, pre-painted white steel housing assembly. Die-formed and spot welded, heavy-gauge steel door frame. Welded, narrow cell steel wireguard (1 x 4 inches).

Finish

Pre-painted, high-reflectance white housing. White, polyester powder painted wireguard and door frame.

Electrical

Rotary lampholders ensure positive lamp retention. Sufficient knockouts are provided for connections and through wiring.

Approvals

Approved to CSA and UL standards.

Features

- Available with 1, 2, 3, 4, 5 or 6 lamps (T5, T8 and PLL/Biax configurations)
- Available in 1 x 4, 2 x 2 and 2 x 4 configurations
- Hinged frame retains wireguard with a standard clear prismatic diffuser, for easy maintenance
- Die-formed integrated hinged frame
- Heavy-duty narrow cell (1 x 4) wireguard
- Access plate for quick wiring

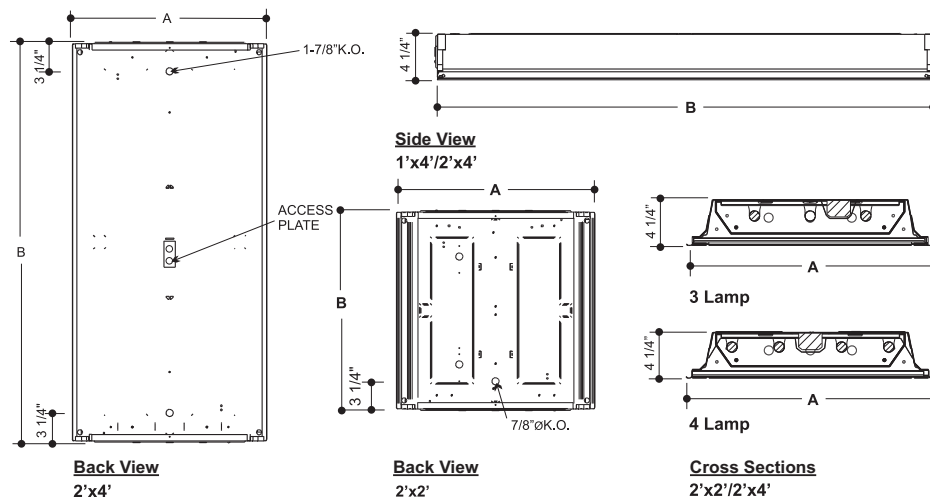
Options & Adders

- Multi-level switching
- Dimmable and Emergency ballast
- Radio interference filter (120V - 277V)
- Drywall flange kits available
- Polycarbonate or Prismatic high-impact acrylic diffuser
- 20 gauge riveted construction
- Flexible metal whip - 6 foot x 3/18 gauge conductors

Applications

- Athletic Centers
- Gymnasiums
- Multi-Purpose Facilities

Dimensions



MODEL CONFIGURATION	A	B
1'x4'	11 3/4"	47 3/4"
2'x2'	23 3/4"	23 3/4"
2'x4'	23 3/4"	47 3/4"

Project
Type
Date
Cat #

GYMR Gymnasium Recessed

Specification-Grade Recessed Hinged Door Frame Luminaire With Wireguard



Photometrics - Please consult www.viscor.com for photometric results.

Ordering

GYMR			-					-		Options
------	--	--	---	--	--	--	--	---	--	---------

Size (Width x Length)	No. of Lamps	Lamp Watts See Table below	Voltage
1x4	1	Lamp Type T5 T5HO T8 T8U6 PLL	Ballast Type N - Instant Start P - Program Start
2x2	2		
2x4	3		
	4		
	5		
	6		

Ballast Options

(See Option Code Section For More Information)

- ☐ B02 Dimming Addressable Digital (dali)
- ☐ B03 Dimming Low Voltage (0-10v)
- ☐ B04 Dimming Line Voltage
- ☐ B08 Ballast - High Ballast Factor
- ☐ B09 Ballast - Low Ballast Factor
- ☐ B30 Emergency USA Lighting Battery Pack (Specification Grade)
- ☐ B33 Emergency Lighting Battery Pack 1-lamp
- ☐ B34 Emergency Lighting Battery Pack 2-lamp

Housing Construction Options

- ☐ C03 Tamperproof Fasteners
- ☐ C06 Housing 20 Gauge Riveted

Gasket Options

- ☐ G2 Gasket light Leak

Packaging Options

- ☐ K0 Pack Bulk/ Pallet Packed and/or Wrapped

Lens and Shielding Options (select one only)

(Pattern 12 prismatic acrylic is standard)

- ☐ P05 Clear Acrylic Lens - 0.125" Thick
- ☐ P07 Lens Clear Polycarbonate
- ☐ P13 Lens Prismatic Acrylic - P12 Nominal - 0.125" Thick
- ☐ P15 Lens Prismatic High Impact Acrylic - P12
- ☐ P16 Lens Prismatic Polycarbonate - P12
- ☐ P45 Lens Clear Polycarbonate - .125" Thick

Fusing and Breaker Options (select one only)

- ☐ T5 Fuseholder, In-line Double Pole
- ☐ T6 Fuseholder, In-line Single Pole

Wiring Options

- ☐ V09 Flexible Whip (standard 6' X 3-18 Ga.)
- ☐ V25 Radio Frequency Filter
- ☐ V31 Wiring 1-Switch Lead
- ☐ V33 Wiring 2-Switch Leads
- ☐ V35 Wiring 3-Switch Leads

Reflector Options

- ☐ VF1 Reflector VF1 Specular (95% Reflectance) Aluminum

Approval and Rating Options

- ☐ X7 Dual CSA and USA Market

Lamp Options

- ☐ Z1 Lamps installed (specify type)

Example:

GYMR2x44-T528PUNV-B01C06G2P07

Lamp Watts

Size	Nom. Lamp Watts				
	T5	T5HO	T8	T8U6	PLL/ BiAx
1x4	28 (1 or 2 lamps)	54 (1 or 2 lamps)	32 (1 or 2 lamps)		
2x2	14 (2, 3 or 4 lamps)	24 (2, 3 or 4 lamps)	17 (2, 3 or 4 lamps)	32 (1 or 2 lamps)	40, 50, 55 (2, 3 or 4 lamps)
2x4	28 (2,3,4 lamps)	54 (2,3,4 lamps)	32 (2,3,4 lamps)		

Other options may be available consult factory.
Specifications and data subject to change without notice.