



Project
Type
Date
Cat #

Application Features

Premium-grade, fluorescent strip luminaire. For use with indoor applications where low-cost, but industrial-grade ruggedness is required. It is ideal in contained areas where the direction of light is controlled by a narrow beam reflector. Socket bar flips up for easy installation when converting to raceway for continuous row-mounting. Available in lengths from 18 to 96 inches.

Specifications

Optical System

Standard reflectors are solid and are coated with a durable, high-reflectance white finish. Optional reflectors are available with 1/2 reflector or asymmetric cutoffs, in white and specular aluminum with a minimum reflectance of 95%.

Mounting

Mounting holes are provided. This product can be surface or stem-mounted. For chain mounting, consult factory.

Construction

Die and brake-formed, code gauge, pre-painted white steel. Screw-fastened end plates can be repositioned to serve as joiners for continuous row-mounting, thus forming a continuous, uninterrupted wireway. Single-piece reflector on non-tandem units.

Finish

Pre-painted, high-reflectance white housing.

Electrical

Rotary lampholders ensure positive lamp retention. Sufficient knockouts are provided for connections and through wiring.

Approvals

Approved to CSA and UL standards.

Features

- Single-piece reflectors
- Continuous raceway and row-mounting capability
- Surface or stem mountable
- Available in lengths from 18 to 96 inches
- Flip-up socket bars
- Available in T8 and T12 configurations

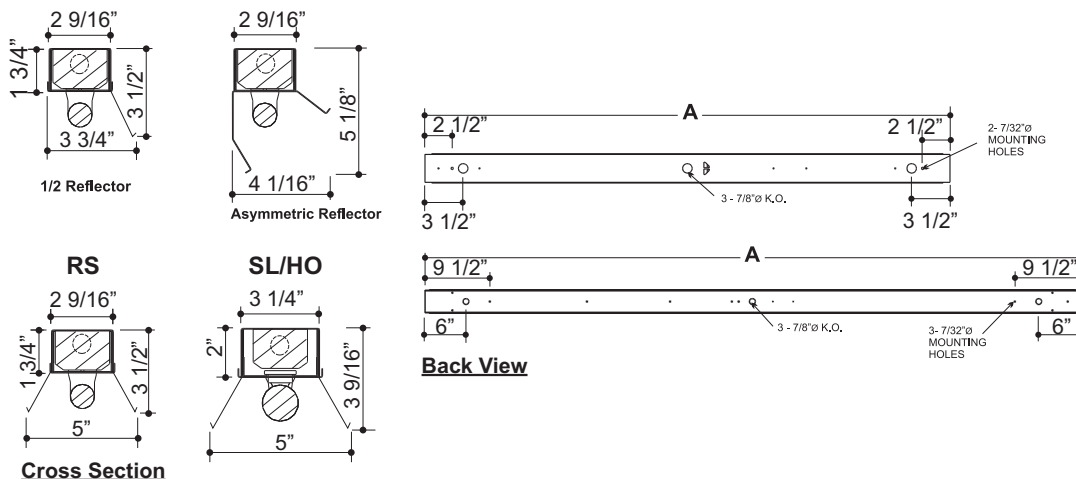
Options & Adders

- Dimmable and Emergency ballast
- Heavy-duty wireguards with powder coated white finish comes with mounting hardware
- Aligner clips for row-mounting
- In-line fuse holder
- Pull chain, Toggle or Turn switch

Applications

- Coves
- Garages and Workshops
- Manufacturing and Warehouse Areas
- Storage Areas
- Utility Areas

Dimensions



MODEL	LENGTH A (in.)
118	18
124	24
136	36
136/2	72
148	48
148/2	96
148/36	84
172	72
196	96

