



Project
Type
Date
Cat #

Application Features

Premium-grade, surface-mounted ceiling/wall luminaire. For use with indoor applications where low-glare illumination and ease of installation is required. Optional mischief-resistant fasteners are available where a tool is required to remove diffuser.

Specifications

Optical System

Standard diffuser is a clear, prismatic acrylic designed for even and low-glare illumination.

Mounting

Mounting holes are provided. Mounts over electrical junction box.

Construction

Die and brake-formed, heavy-gauge steel housing assembly. End-caps are screw fastened.

Finish

White, polyester powder painted housing. High-reflectivity coated reflecting surfaces for improved efficiency.

Electrical

Rotary lampholders ensure positive lamp retention. Sufficient knockouts are provided for connections and through wiring.

Approvals

Approved to CSA and UL standards.

Features

- Heavy-duty construction
- Steel housing with optional mischief resistant screw-fastened end caps that are designed to secure diffuser
- Available with 1 or 2 lamps (T5 and T8 configurations)
- Clear, prismatic, acrylic wrap-around diffuser
- Easy re-lamping and re-ballasting

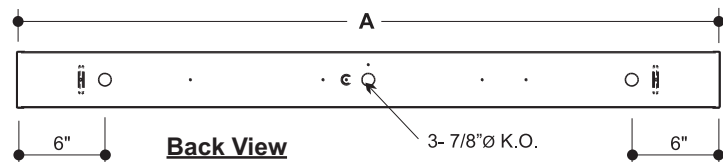
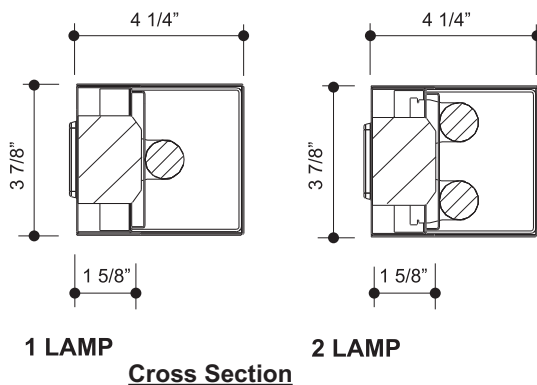
Options & Adders

- Multi-level switching
- Dimmable and Emergency ballast
- Radio interference filter (120V - 277V)
- Prismatic acrylic overlay
- Three-way pull chain switch
- Pull chain switch

Applications

- Corridors
- Utility Areas
- Vanities

Dimensions



MODEL			
1 LAMP	2 LAMP	NOMINAL LENGTH	A
115	215	15"	15 1/16"
118	218	18"	18 1/16"
124	224	24"	24 1/16"
136	236	36"	36 1/16"
148	248	48"	48 1/16"

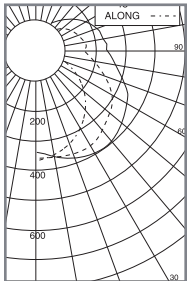
MCAD
Magic Cadillac

Premium-Grade Surface-Mounted Cube Light With Patterned Lens Retained By Fastened Ends



Photometrics - MCAD248-T832N120 - Efficiency 80.0%

Candle Distribution



Luminance Summary-CD. / SQ. M.

ANGLE	ALONG	45	ACROSS
45	3037	2960	2950
55	2920	2918	2935
65	2731	2862	2913
75	2434	2781	2904
85	2008	2841	2953

Candle Power Summary

ZONE	LUMENS	% LAMP	% LUMINAIRE
0 - 30	301.00	10.23	12.78
0 - 40	520.00	17.63	22.03
0 - 60	1036.00	35.14	43.91
0 - 90	1681.00	57.00	71.24
40 - 90	1161.00	39.37	49.21
60 - 90	645.00	21.86	27.33
90 - 180	678.00	23.01	28.76
0 - 180	2360.00	75.30	100.00

Ordering

The diagram illustrates the MCAD code structure. It starts with a box labeled 'MCAD' followed by several empty boxes for options. The options are categorized into several groups:

- Number of lamps in Cross Section:** Options 1 and 2.
- Nom. Length (in.):** Options 15, 18, 24, 36, and 48.
- Tandem:** A single option box.
- Lamp Watts:** A box labeled 'See Table below'.
- Lamp Type:** Options T5, T5HO, and T8.
- Ballast Type:** Options N (Instant Start), P (Program Start), and R (Rapid Start).
- Voltage:** Options 120 - 120V, 347 - 347V, UNV - 120-277V, and UN4 - 347-480V.
- Options:** A final box for additional options.

Below the diagram, a note states: (Blank) - N/A
/2 - Single Housing

Example:

MCAD248-T832PUNV-B01P04S2

Lamp Watts

Length	Nominal Lamp Watts		
	T5	T5HO	T8
15	-	-	14
18	-	-	15
24	14	24	17
36	21	39	25
48	28	54	32

Other options may be available consult factory.
Specifications and data subject to change without notice.

Ballast Options

(See Option Code Section For More Information)

- ☐ B02 Dimming Addressable Digital (dali)
- ☐ B03 Dimming Low Voltage (0-10v)
- ☐ B04 Dimming Line Voltage
- ☐ B08 Ballast - High Ballast Factor
- ☐ B09 Ballast - Low Ballast Factor
- ☐ Emergency Lighting Battery Pack Specification Grade
- ☐ B33 Emergency Lighting Battery Pack 1-lamp
- ☐ B34 Emergency Lighting Battery Pack 2-lamp

Finish Options (white is standard)

- ☐
- F01 Black

Packaging Options

- ☐
- K0 Pack Bulk/Pallet Packed and/or Wrapped

Lens and Shielding Options

(Prismatic P12 is standard)

- ☐ P04 Lens Acrylic Smooth Opal
- ☐ P13 Lens Prismatic Acrylic -P12 .125" Thick

Switch Options (select one only)

- | | | |
|--------------------------|----|-------------------------|
| <input type="checkbox"/> | S1 | Switch Pull-chain |
| <input type="checkbox"/> | S2 | Switch Pull-chain 3-way |
| <input type="checkbox"/> | S5 | Switch Toggle |
| <input type="checkbox"/> | S6 | Switch Turn |

Wiring Options

- ☐ V02 Convenience Outlet
- ☐ V25 Radio Frequency Filter

Approval and Rating Options

- ☐ X7 Dual CSA and USA Markets