



Project
Type
Date
Cat #

Application Features

Premium-grade, staggered fluorescent strip luminaire. For use with indoor applications where continuous uniform row lighting without "socket-end" dark spots is desired (such as coves). This luminaire utilizes two disjointed connected housings to achieve the staggered effect required for the applications intended. Available in nominal lengths from 24 to 96 inches.

Specifications

Mounting

Mounting holes are provided.

Construction

Die and brake-formed, code gauge, pre-painted white steel. Single wireway cover on non-tandem units. Sufficient knockouts are provided on ends and back to accommodate multiple mounting configurations.

Finish

Pre-painted high-reflectance white housing.

Electrical

Rotary lampholders ensure positive lamp retention. Sufficient knockouts are provided for connections and through wiring.

Approvals

Approved to CSA and UL standards.

Features

- Heavy-duty construction
- Available with 1 or 2 lamps (T8 and T12 configurations)
- Designed specifically for row-mounting
- Overlapping lamps eliminate "socket-end" dark spots
- Available in lengths from 24 to 102 inches

Options & Adders

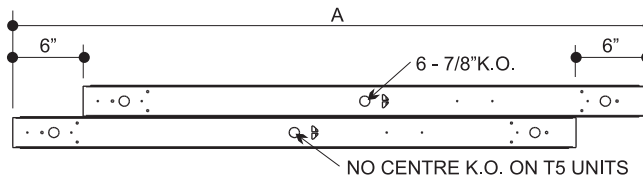
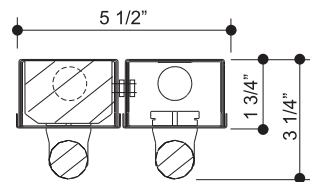
- Multi-level switching
- Dimmable and Emergency ballast
- Radio interference filter (120V - 277V)
- In-line fuse holder

Applications

- Coves
- Display Cabinets
- Valances

Dimensions

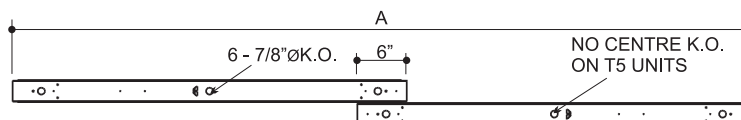
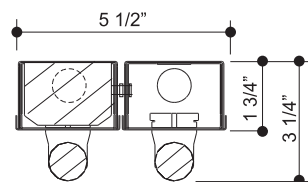
1 LAMP



Back View

MODEL T8/T12	NOMINAL LENGTH	ACTUAL LENGTH A (in.)
124	2'	24
136	3'	36
148	4'	48
124/2	4'	42
136/2	6'	66
148/2	8'	90

2 LAMP



T8

MODEL T8/T12	NOMINAL LENGTH	ACTUAL LENGTH A (in.)
224	2'	30
236	3'	42
248	4'	54
236/2	6'	78
248/2	8'	102

