

Project
Type
Date
Cat #

Application Features

Premium-grade, under cabinet task light. For use with indoor applications where low-glare illumination and ease of installation is required. This luminaire's compact design and acrylic diffuser makes it ideal for under cabinet illumination.



Specifications

Optical System

Extruded, white opal, ribbed, linear prismatic acrylic diffuser provides soft illumination.

Mounting

Mounting holes are provided. Mounts over electrical junction box.

Construction

Die-formed, code gauge steel.

Finish

White, polyester powder painted housing. High-reflectivity coated reflecting surfaces for improved efficiency.

Electrical

Rotary lampholders ensure positive lamp retention. Sufficient knockouts are provided for connections and through wiring.

Approvals

Approved to CSA and UL standards.

Features

- Ideal for under cabinet lighting
- Easy re-lamping and re-ballasting
- Ribbed, white opal, acrylic diffuser
- Available in T5 and T8 configurations

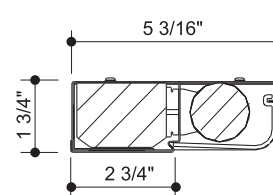
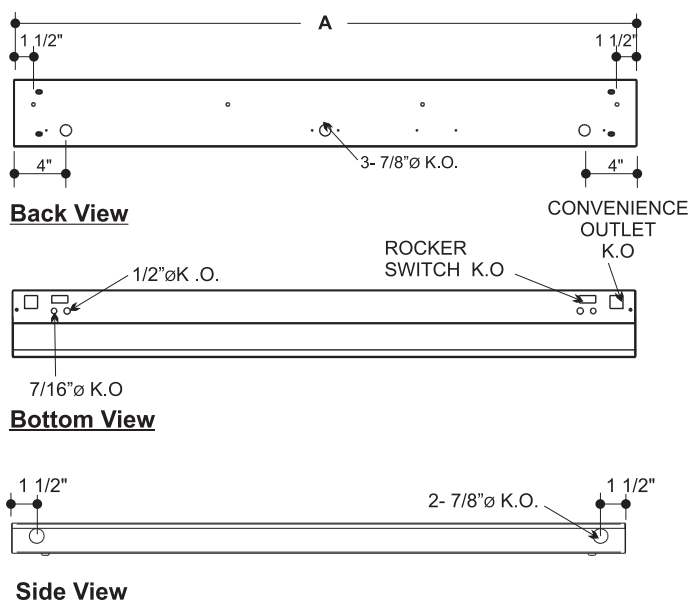
Options & Adders

- Dimmable and Emergency ballast
- Convenience outlet
- Cord and plug
- Pull chain switch
- Rocker switch with optional built-in circuit breaker
- Toggle switch
- Turn switch

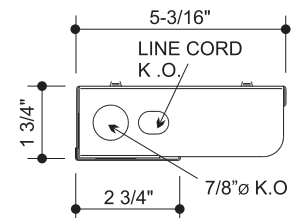
Applications

- Display Cabinets
- Kitchens
- Office Areas
- Task Lighting
- Under Counters
- Work Stations

Dimensions



Cross Section



End View

MODEL CONFIGURATION	LENGTH A (in.)
118	18
124	24
136	36
148	48

