

Project:	Catalogue #:	Type:
Notes:		

**Product Description**

Premium-grade high or low bay IP67 LED luminaire. For use with indoor and outdoor applications where high-efficiency, high-performance and dust/water resistance is required. This luminaire's glass reinforced polyester housing and acrylic lens makes it ideal for applications that require a high degree of ingress protection. Suitable for 1500psi Pressure spray down. Operating ambient temperature range is from -40° to 55°C\*. For use in wet locations.

**Applications**

Canopies, Dusty and Damp locations, Food processing, Parking garage, Wet location, Gymnasiums.

**Features**

- IP65/67 - Ingress Protection Rating
- Meets Canada Food Inspection Agency standards
- NSF and NEMA 4X Certified
- Replaces 250 or 400 watt HID fixtures
- Up to 50% energy savings compared to equivalent metal halide luminaire
- 80+ CRI
- Standard low voltage dimming (0-10V, 1%)

**Featured Options**

- Emergency battery pack
- Motion Sensors
- Ceiling-mount bracket
- Stainless Steel Latches
- Clear, textured polycarbonate lens with linear ribs

**Optical System**

Lens is optically clear, impact resistant acrylic for maximum light transmission and longevity or optional UV stabilized polycarbonate lenses for maximum impact resistance. The sides have precise linear prisms and ends are frosted to reduce direct glare.

**Mounting**

Stainless steel V-hook with hook hangers are standard. Optional cable hangers and ceiling mount brackets are available.

**Construction**

Molded one-piece glass reinforced plastic housing. Continuous poured in place polyurethane gasket. Diffuser flange fits into the gasketed retention slot providing a continuous seal, and is held in place with white celcon retaining latches. Holes on each end are 7/8 inch nominal diameter and are provided with two EPDM rubber caps for connection and through wiring.

**Finish**

Pre-painted steel geartrays.

**Suspension**

Several suspended mounting accessories are available (See mounting accessories).

**Electrical**

All electrical components are CSA approved or UL listed. Long life LEDs coupled with high efficiency drivers provide quality illumination. Rated to deliver L80 performance > 60,000 hours. System efficacy >140 lumens per watt for standard units.

**Warranty**

5 year limited warranty. For complete warranty, click here: 

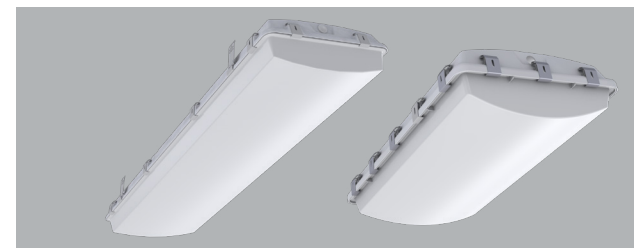
\*Maximum ambient temperature, refer to lumens chart on page 2. See Mounting KIT00013 and KIT00006



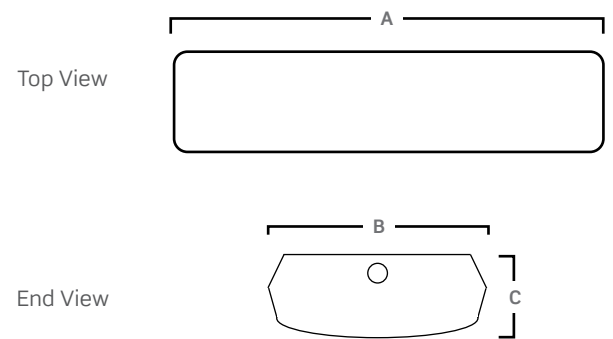
**Approvals**

- Approved to CSA and UL standards.
- Tested to LM79 standards. Suitable for wet locations.
- DesignLights Consortium® Qualified.

All configurations may not be DLC qualified. Check [www.designlights.org/QPL](http://www.designlights.org/QPL) for qualified configurations.



**Dimensions**



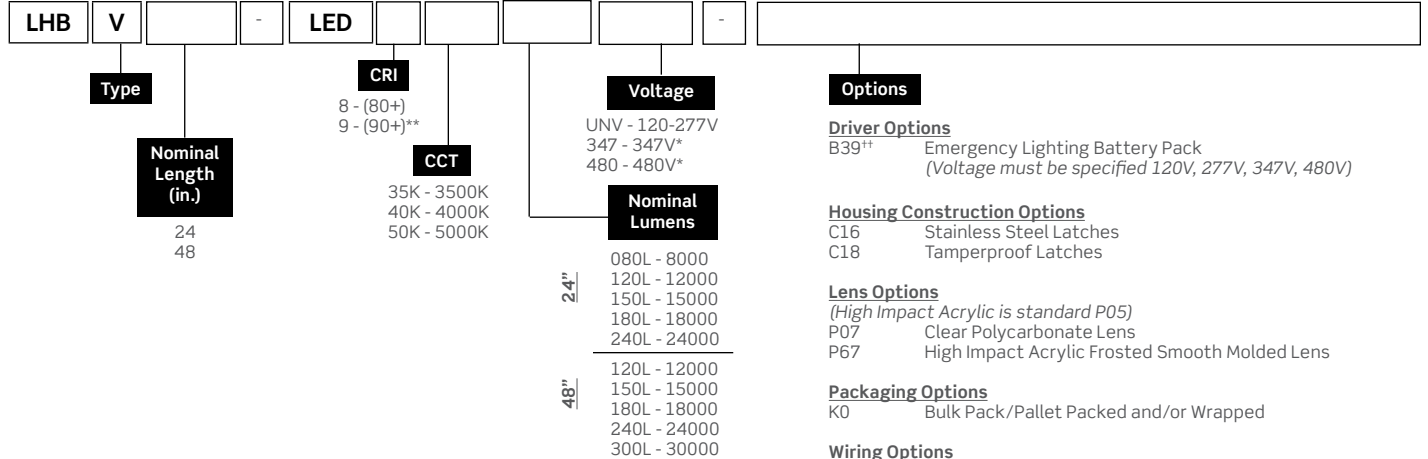
Size	A	B	C
24"	24.62"	14.527"	5.825"
48"	52"	14.625"	6.166"

Consult installation guide for exact dimensions.

Project:	Catalogue #:	Type:
Notes:		

**Order Key**

**EXAMPLE: LHBV48-LED840K180LUNV-P07**



Mounted Accessories (Ordered Separately)	
KIT00001	Mounting Chain Set (2) 4ft w/ S-Hooks.M10
KIT00006	Rigid Mounting Beam.M63
KIT00013	Ceiling Plate w/ Wireform.M39
KIT00040	Chain Set (2) 6ft.M10 w/ S-Hooks (4)
KIT00042	Chain Set (2) 12ft.M10 w/ S-Hooks (4)
KIT00092	25 Degree Bracket.M43(25)
KIT00093	45 Degree Bracket.M43(45)

Occupancy Sensors (If Ordered Separately)	
KIT00065	IP65 Motion Sensor Kit (UNV)
KIT00066	IP65 Motion Sensor Kit (UN4)

**Driver Options**  
 B39\*\* Emergency Lighting Battery Pack  
 (Voltage must be specified 120V, 277V, 347V, 480V)

**Housing Construction Options**  
 C16 Stainless Steel Latches  
 C18 Tamperproof Latches

**Lens Options**  
 (High Impact Acrylic is standard P05)  
 P07 Clear Polycarbonate Lens  
 P67 High Impact Acrylic Frosted Smooth Molded Lens

**Packaging Options**  
 K0 Bulk Pack/Pallet Packed and/or Wrapped

**Wiring Options**  
 V08 Flexible Cord Feed (Single Circuit Cord) 6-ft Standard  
 V10(1) Hub Compact for 1/2" Threaded Pipe (3/4" OD) - 1 End  
 V10(2) Hub Compact for 1/2" Threaded Pipe (3/4" OD) - 2 End  
 V15 Liquid Tight Strain Relief (Not For XH)  
 V32 Wiring 2-Circuit Cord

**Approval and Rating Options**  
 XH Class I Zone 2 Groups IIC, IIB + H2, IIA  
 Zone 22 Groups IIB, IIA  
 (Class I Div 2 Groups A, B, C, D  
 Class II Div 2 Groups F, G  
 Class III)  
 T3C or T4

**Controls Options**  
[Click Here](#) for wireless controls guide.  
 V68 Microwave Occupancy Sensor  
 V82 IP65 Motion Sensor (For Wet Locations)

**Note:** Supplied with 2 pc. of HAZLOC 1/2" Hubs and 1 pc. of 1/2" Thread Plug.  
**Cord not available.**

\*\* Emergency battery packs have limited operating temperatures.  
 If fixture is to be switched a 2 circuit cord V32 is advised. Consult factory.  
 \* Emergency battery pack is not available with Haz Loc (HX)  
 \*\* 90+ CRI reduces lumen output by 20%, not available with 5000K

Other options may be available, consult factory. Specifications and data subject to change without notice.

**Additional Options**



Project:	Catalogue #:	Type:
Notes:		

Performance Data

Size	Lumen Package	Delivered Lumens @4000K CCT 25°C Ambient						Watts	Thermal (Surface °C)	Thermal (Pendant °C)
		(STD) P05	(STD) P05 lm/W	P07	P07 lm/W	P67	P67 lm/W			
24"	080L	8069	147.5	7895.5	144.3	7908.8	144.6	54.7	-40 to 50	-40 to 55
	120L	12466	152.4	12197.9	149.1	12218.5	149.4	81.8	-40 to 45	-40 to 50
	150L	15426	148.8	15094.3	145.6	15119.8	145.8	103.7	-40 to 40	-40 to 45
	180L	18540	149.3	18141.3	146.0	18171.9	146.3	124.2	-40 to 37	-40 to 42
	240L	24235	147.9	23713.9	144.8	23753.9	145.0	163.8	-40 to 35	-40 to 40
48"	120L	12003	152.4	11830	151.0	11850	151.0	78.8	-40 to 55	-40 to 55
	150L	15007	148.8	14640	147.0	14645	147.0	100.9	-40 to 52	-40 to 55
	180L	18005	152.4	17725	147.0	17745	147.0	118.1	-40 to 53	-40 to 55
	240L	24034	152.9	23540	150.0	23550	150.0	157.2	-40 to 49	-40 to 51
	300L	30120	149.2	28990	145.0	29000	145.0	201.9	-40 to 40	-40 to 43

Lifetime Expectancy

	Calculated Hours	Reported Hours
L70	≥217,000	> 60,000
L80	≥135,000	> 60,000
L90	≥62,000	> 60,000

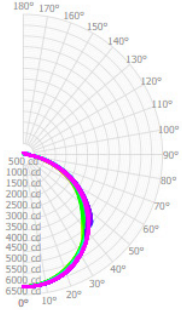
Values based on 840K

Performance Scaling Factor

	50K	40K	35K	30K
80CRI	1.000	1.000	0.960	0.946
90CRI	0.875	0.875	0.836	0.809

Photometrics

IES File: LHBV24-LED840K180LUNV-P05  
 Lumens: N/A  
 Wattage: 127  
 Efficacy: 146



Zonal Lumen Summary

Zone	Lumens	
0.0° - 30.0°	4819	26.0%
0.0° - 40.0°	7924	42.7%
0.0° - 60.0°	14153	76.3%
0.0° - 90.0°	18022	97.2%
0.0° - 110.0°	18233	98.3%
0.0° - 130.0°	18379	99.1%
0.0° - 150.0°	18477	99.7%
0.0° - 170.0°	18533	100.0%
0.0° - 180.0°	18540	100.0%

Average Luminance Table (cd/m2) CP Summary

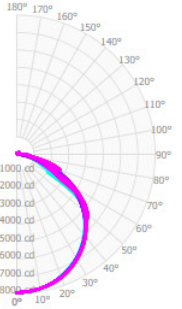
	0.00°	45.00°	90.00°
0.00°	22103	22103	22103
45.00°	21685	20944	20081
55.00°	20800	19261	20490
65.00°	18635	18950	19753
75.00°	14591	16233	16333
85.00°	7196	11239	11988

Coefficients of Utilization

pc	80%				80%				70%							
	70%	50%	30%	10%	70%	50%	30%	10%	50%	30%	10%	50%	30%	10%	30%	
0	21948	21948	21948	21948	21377	21377	21377	21377	20312	20312	20312	19338	19338	19338	18443	18443
1	20025	19132	18332	17610	19465	18659	17933	17274	17775	17179	16633	16963	16480	16032	16214	15828
2	18184	16644	15372	14302	17646	16248	15081	14091	15504	14526	13682	14818	14005	13292	14184	13515
3	16559	14590	13067	11854	16052	14256	12847	11713	13628	12426	11437	13046	12027	11172	12506	11649
4	15143	12905	11265	10013	14674	12622	11095	9914	12089	10767	9720	11594	10455	9532	11134	10157
5	13912	11512	9835	8597	13482	11272	9700	8525	10818	9440	8383	10396	9190	8244	10001	8951
6	12837	10351	8682	7485	12445	10146	8573	7430	9758	8363	7322	9395	8160	7216	9056	7965
7	11894	9374	7739	6594	11540	9198	7650	6551	8864	7477	6467	8552	7311	6384	8258	7150
8	11065	8544	6958	5869	10744	8393	6884	5835	8104	6741	5767	7833	6602	5701	7579	6467
9	10333	7835	6304	5270	10042	7703	6242	5242	7452	6121	5188	7216	6004	5134	6993	5890
10	9682	7222	5750	4770	9418	7108	5697	4747	6888	5595	4702	6681	5495	4657	6485	5398

Effective Floor Cavity Reflectance: 20%

IES File: LHBV48-LED840K240LUNV-P05  
 Lumens: N/A  
 Wattage: 157.2  
 Efficacy: 153



Zonal Lumen Summary

Zone	Lumens	
0.0° - 30.0°	6268	26.1%
0.0° - 40.0°	10368	43.1%
0.0° - 60.0°	18642	77.6%
0.0° - 90.0°	23447	97.6%
0.0° - 110.0°	23675	98.5%
0.0° - 130.0°	23833	99.2%
0.0° - 150.0°	23961	99.7%
0.0° - 170.0°	24025	100.0%
0.0° - 180.0°	24034	100.0%

Average Luminance Table (cd/m2) CP Summary

	0.00°	45.00°	90.00°
0.00°	17245	17245	17245
45.00°	16825	15411	15093
55.00°	16568	14407	13727
65.00°	10944	11721	11279
75.00°	15044	8488	7134
85.00°	12490	6306	2067

Coefficients of Utilization

pc	80%				80%				70%							
	70%	50%	30%	10%	70%	50%	30%	10%	50%	30%	10%	50%	30%	10%	30%	
0	28472	28472	28472	28472	27741	27741	27741	27741	26378	26378	26378	25131	25131	25131	23986	23986
1	25960	24794	23750	22809	25242	24190	23241	22381	23058	22280	21566	22019	21387	20801	21061	20555
2	23597	21602	19954	18569	22907	21096	19583	18300	20146	18877	17782	19269	18214	17288	18458	17590
3	21506	18961	16992	15423	20857	18535	16713	15245	17733	16178	14898	16991	15672	14564	16302	15191
4	19679	16786	14667	13049	19079	16426	14451	12924	15746	14036	12681	15115	13640	12445	14528	13262
5	18084	14982	12814	11213	17534	14676	12643	11123	14098	12314	10946	13560	11998	10773	13057	11696
6	16688	13473	11314	9765	16188	13212	11177	9698	12718	10911	9564	12257	10656	9433	11825	10410
7	15463	12200	10085	8603	15009	11977	9973	8550	11553	9756	8447	11155	9546	8345	10782	9343
8	14383	11119	9065	7654	13972	10926	8973	7613	10559	8792	7530	10215	8617	7449	9891	8448
9	13428	10192	8210	6871	13055	10025	8132	6837	9707	7980	6770	9406	7833	6704	9123	7691
10	12580	9393	7485	6215	12242	9247	7419	6187	8968	7290	6132	8705	7165	6077	8457	7044

Effective Floor Cavity Reflectance: 20%