

Project:	Catalogue #:	Type:
Notes:		

### Product Description

Commercial-grade, LED modular linear luminaire with direct and indirect illumination. This luminaire features a narrow design and is ideal for architectural applications that require clean and uniform lines.

### Applications

Office Areas, Perimeters, Retail Stores, Corridors, Classrooms, Libraries, Hospitality



### Features

- Frosted Lenses
- Continuous row-mounting capability
- 80+ CRI
- Standard low voltage dimming (0-10V)

### Featured Options

- Available in direct/indirect and direct configurations
- Emergency Lighting Battery Pack
- Downlight only option available

### Optical System

Standard top clear diffuser and bottom frosted diffuser are both lay-in lenses.

### Mounting

Standard aircraft cable for suspended-mount application (nominal 4 foot suspension). Suitable for row-mounting, see ordering key for various configurations.

### Construction

Precision-formed steel housing assembly.

### Finish

White, polyester powder painted housing.

### Electrical

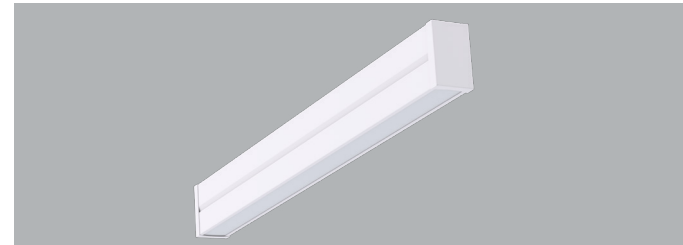
Long life LEDs coupled with high efficiency drivers provide quality illumination. Rated to deliver L80 performance > 50,000 hours. Standard 4 foot nominal white, single-circuit. All electrical components are CSA approved or UL listed.

### Warranty

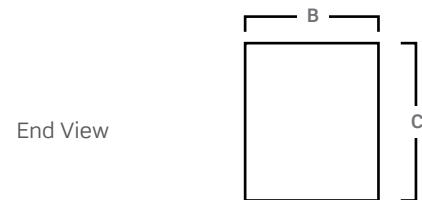
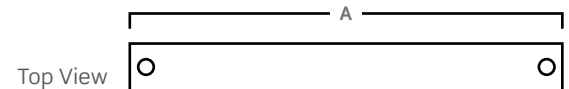
5 year limited warranty. For complete warranty, click here: 

### Approvals

- Approved to CSA/UL standards.
- Rated for damp locations



### Dimensions



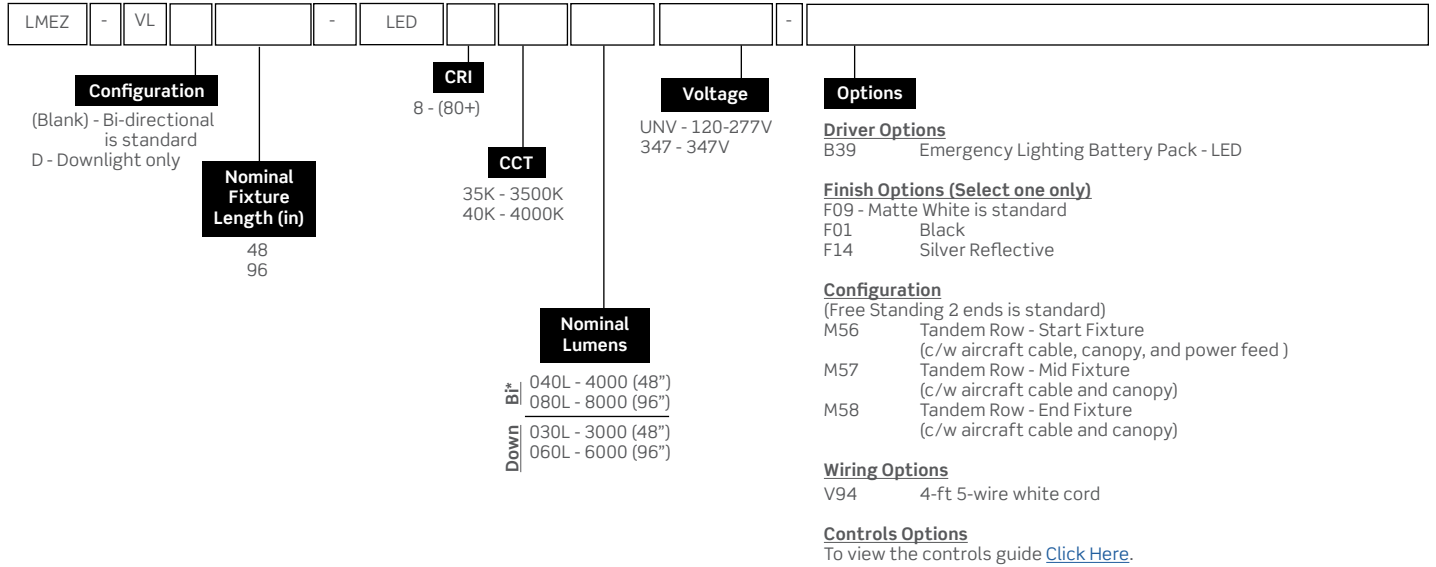
Size	A	B	C
48"	44 1/2"	3"	4 1/2"
96"	88 3/4"	3"	4 1/2"

Consult installation guide for exact dimensions.

Project:	Catalogue #:	Type:
Notes:		

### Order Key

**EXAMPLE: LMEZ-VL48-LED840K040LUNV**



Other options may be available, consult factory. Specifications and data subject to change without notice.

### Performance Data

Size	Nominal Lumens	Watts
48"	3000 (Down)	34
	4000 (Bi)	39
48"	6000 (Down)	68
	8000 (Bi)	78

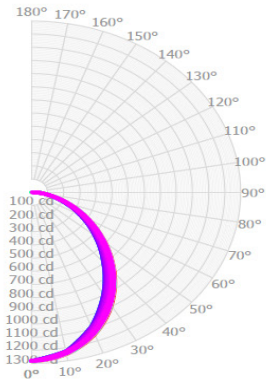
### Performance Scaling Factor

	50K	40K	35K	30K
80CRI	1.000	1.000	0.960	0.946
90CRI	0.875	0.875	0.836	0.809

Project:	Catalogue #:	Type:
Notes:		

**Photometrics**

IES File: **LMEZ-VLD48-LED840K030LUNV**  
 Lumens: **2893**  
 Wattage: **37**  
 Efficacy: **78**



**Zonal Lumen Summary**

Zone	Lumens	%Fixture
0.0° - 30.0°	925	32.0%
0.0° - 40.0°	1452	50.2%
0.0° - 60.0°	2369	81.9%
0.0° - 90.0°	2893	100.0%
0.0° - 110.0°	2893	100.0%
0.0° - 130.0°	2893	100.0%
0.0° - 150.0°	2893	100.0%
0.0° - 170.0°	2893	100.0%
0.0° - 180.0°	2893	100.0%

**Coefficients of Utilization**

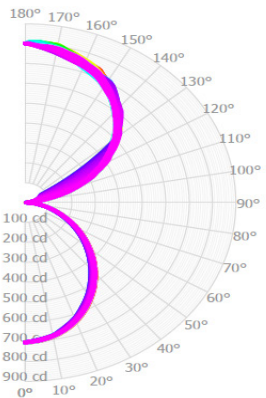
pc	80%			70%			50%		
	70%	50%	30%	70%	50%	30%	70%	50%	30%
0	119	119	119	116	116	116	111	111	111
1	109	105	101	107	102	99	102	98	95
2	100	92	85	97	90	84	93	87	82
3	92	81	74	89	80	73	85	77	71
4	84	73	64	82	71	63	78	69	62
5	78	65	57	76	64	56	72	62	55
6	72	59	51	70	58	50	67	56	49
7	67	54	45	65	53	45	62	52	44
8	63	49	41	61	49	41	58	47	40
9	59	46	38	57	45	37	55	44	37
10	55	42	34	54	42	34	51	41	34

**Average Luminance Table (cd/m<sup>2</sup>)**  
**CP Summary**

	0.00°	45.00°	90.00°
0.00°	17879	17879	17879
45.00°	13821	12826	12049
55.00°	12233	11386	10744
65.00°	10590	10064	9657
75.00°	8831	8765	8687
85.00°	6927	8117	8802

Effective Floor Cavity Reflectance: 20%

IES File: **LMEZ-VL48-LED840K040LCUNV**  
 Lumens: **3898**  
 Wattage: **33.2**  
 Efficacy: **117**



**Zonal Lumen Summary**

Zone	Lumens	%Fixture
0.0° - 30.0°	523	13.4%
0.0° - 40.0°	837	21.5%
0.0° - 60.0°	1414	36.3%
0.0° - 90.0°	1767	45.3%
0.0° - 110.0°	1872	48.0%
0.0° - 130.0°	2426	62.2%
0.0° - 150.0°	3274	84.0%
0.0° - 170.0°	3822	98.1%
0.0° - 180.0°	3898	100.0%

**Coefficients of Utilization**

pc	80%			70%			50%		
	70%	50%	30%	70%	50%	30%	70%	50%	30%
0	106	106	106	97	97	97	81	81	81
1	97	92	88	88	85	81	73	71	68
2	88	81	75	80	74	69	66	62	58
3	80	71	64	73	65	59	60	55	50
4	73	63	55	67	58	51	55	49	43
5	67	56	48	62	52	44	51	43	38
6	62	50	42	57	46	39	47	39	34
7	57	45	37	52	42	35	43	35	30
8	53	41	33	49	38	31	40	32	27
9	50	37	30	45	35	28	38	30	24
10	46	34	27	42	32	25	35	27	22

**Average Luminance Table (cd/m<sup>2</sup>)**  
**CP Summary**

	0.00°	45.00°	90.00°
0.00°	9824	9824	9824
45.00°	8250	8006	7781
55.00°	7594	7370	7159
65.00°	6846	6706	6534
75.00°	5956	5993	5934
85.00°	4155	5878	6050

Effective Floor Cavity Reflectance: 20%