

Project:	Catalogue #:	Type:
Notes:		

Product Description

Premium-grade, recessed, lay-in coffered T-Bar troffer with modern styling and high visual comfort featuring dual shallow semi-round lenses. For use with indoor applications where lowglare, high-quality and ease of installation are required. This luminaire comes with dual high-efficiency lenses for enhanced performance. This ICrated luminaire's low-profile design makes it ideal for shallow or obstructed plenum applications.

Applications

Office Areas, Retail Stores, Classrooms, Corridors, Hospitals, Nursing Homes

Features

- Shallow design
- Enhanced, uniform lighting delivers a balanced amount of light to walls, cubicles, work surfaces and people
- Extruded acrylic lenses
- Standard low voltage dimming (0-10v, 1%)
- Available in 1x1,1x4, 2x2, 2x4, 20x60, 30x30, 750x750, and 500x1500 configurations
- For use in insulated ceilings

Featured Options

- Emergency lighting battery pack
- Air handling

Optical System

Round linear ribbed frosted acrylic diffuser, offers high levels of efficiency and visual comfort. Indirect reflectors are precision formed and contoured to provide soft, low glare, indirect illumination, while maintaining high-efficiency and a wide, uniform light distribution.

Mounting

This luminaire has been specifically designed for T-Bar applications. Holes provided for chain-mounting support to building structure with integral earthquake clips.

Construction

Die-formed, code gauge steel housing. Precision-formed steel reflector.

Finish

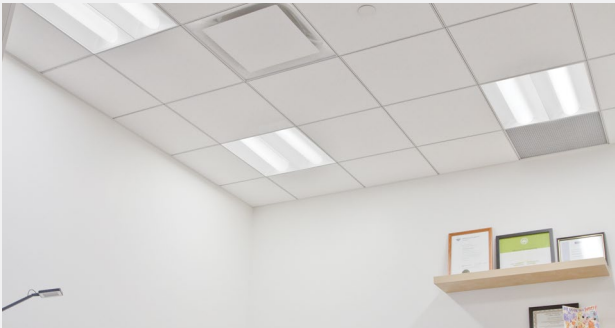
White, polyester powder painted housing.

Electrical

Long life LEDs coupled with high efficiency drivers provide quality illumination. Rated to deliver L80 performance > 50,000 hours.

Warranty

5 year limited warranty. For complete warranty, click here:



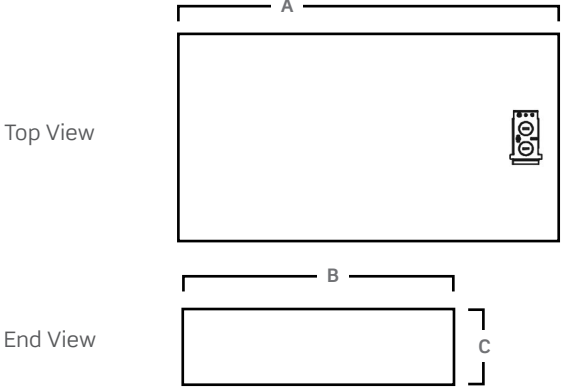
Approvals

- Approved to CSA/UL standards. UL listed for insulated ceilings.
- Tested in accordance to IESNA LM-79.
- Suitable for damp locations.
- DesignLights Consortium® Qualified

All configurations may not be DLC qualified. Check www.designlights.org/QPL for qualified configurations



Dimensions



Size	A	B	C
1x1	11 3/4"	11 3/4"	3 3/8"
1x4	47 3/4"	11 3/4"	3 1/4"
2x2	23 3/4"	23 3/4"	3 3/8"
2x4	47 3/4"	23 3/4"	3 3/8"
20x60	59 3/4"	19 3/4"	3 3/8"
30x30	29 3/4"	29 3/4"	3 3/8"
750x750	744mm	744mm	86mm
500x1500	1494mm	494mm	86mm

Consult installation guide for exact dimensions.

Project:

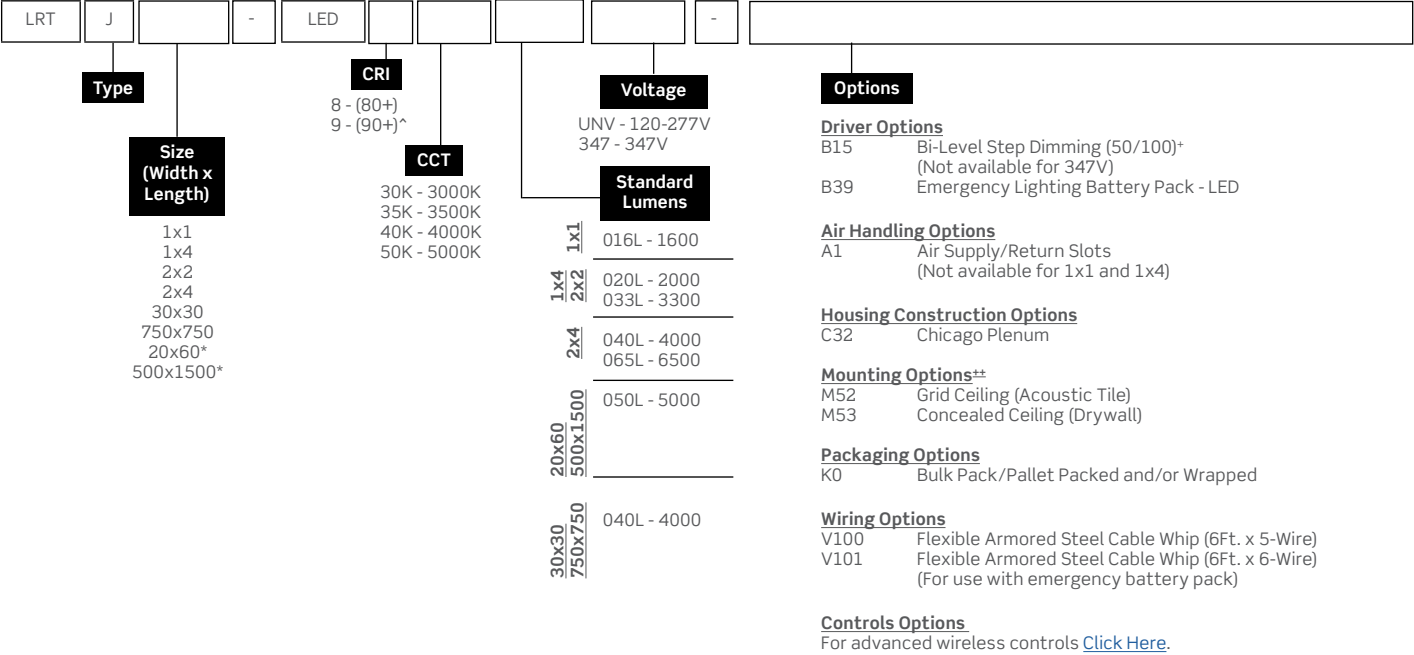
Catalogue #:

Type:

Notes:

Order Key

EXAMPLE: LRTJ2x2-LED840K033LUNV



Project:	Catalogue #:	Type:
Notes:		

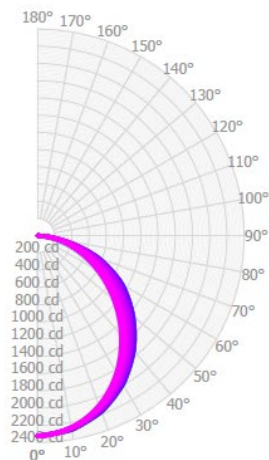
Photometrics

IES File: LRTJ2X4-LED840K065LUNV

Lumens: 6448

Wattage: 52.5

Eff cacy: 123



Zonal Lumen Summary

Zone	Lumens	%Fixture
0.0° - 30.0°	1782	27.6%
0.0° - 40.0°	2895	44.9%
0.0° - 60.0°	5061	78.5%
0.0° - 90.0°	6448	100.0%
0.0° - 110.0°	6448	100.0%
0.0° - 130.0°	6448	100.0%
0.0° - 150.0°	6448	100.0%
0.0° - 170.0°	6448	100.0%
0.0° - 180.0°	6448	100.0%

Coefficients of Utilization

pc	80%			70%			50%		
	70%	50%	30%	70%	50%	30%	70%	50%	30%
pw									
0	119	119	119	116	116	116	111	111	111
1	109	104	100	106	102	98	101	97	94
2	99	90	84	96	89	82	91	85	80
3	90	79	71	87	78	70	83	75	68
4	82	70	61	80	69	61	76	66	59
5	76	63	54	74	62	53	70	60	52
6	70	57	48	68	56	47	64	54	46
7	65	51	42	63	50	42	60	49	41
8	60	47	38	59	46	38	56	45	37
9	56	43	35	55	42	34	52	41	34
10	53	40	32	52	39	32	49	38	31

Average Luminance Table
(cd/m2)
CP Summary

	0.00°	45.00°	90.00°
0.00°	3200	3200	3200
45.00°	2613	2887	3104
55.00°	2367	2772	3093
65.00°	2099	2705	3016
75.00°	1769	2566	2460
85.00°	1151	1702	1645

Effective Floor Cavity Reflectance: 20%