

LRK-TRH - Tunable White

LED - Recessed Troffer Retrofit Kit - Type H

| | | |
|----------|--------------|-------|
| Project: | Catalogue #: | Type: |
| Notes: | | |

Product Description

The LRK-TRH is a commercial-grade low profile LED retrofit Kit for renovating standard 1x4, 2x2 and 2x4 fluorescent troffers and parabolic luminaires. The TRH provides instant energy savings and increased aesthetic appeal with a single shallow semi-round lens. It's clean design and simple installation process makes the LRK-TRH an ideal solution for use with indoor applications where low-glare, high-quality and ease of installation are required.

Applications

Office Areas, Retail Stores, Classrooms, Hospitals, Nursing Homes

Features

- Shallow design
- Enhanced, uniform lighting delivers a balanced amount of light to walls, cubicles, work surfaces and people
- Extruded acrylic lens
- Standard low voltage dimming (0-10v)
- Standard in 1x4, 2x2 and 2x4 configurations
- Available in metric and custom size (consult factory)

Optical System

Round linear ribbed frosted acrylic diffuser, offers high levels of efficiency and visual comfort. Indirect reflectors are precision formed and contoured to provide soft, lowglare, indirect illumination, while maintaining high-efficiency and a wide, uniform light distribution.

Mounting

This luminaire features two steel brackets which are secured to the existing fixture with self-tapping screws. It has been specifically designed for retrofitting recessed T-Bar applications.

Construction

Precision-formed steel doorframe and brackets. The driver and light engine are integral to the TRH's door frame for quick and easy installation.

Finish

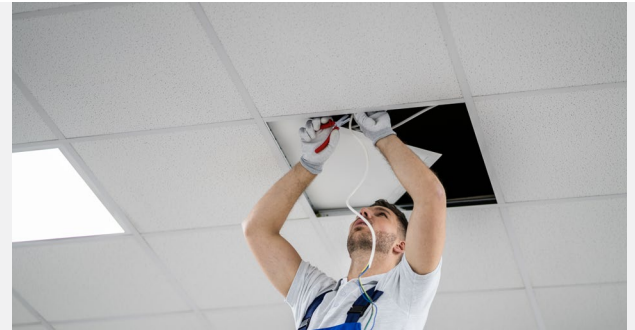
White, polyester powder painted door frame.

Electrical

Long life LEDs coupled with high efficiency drivers provide quality illumination. Rated to deliver L80 performance > 50,000 hours.

Warranty

5 year limited warranty. For complete warranty, click here:



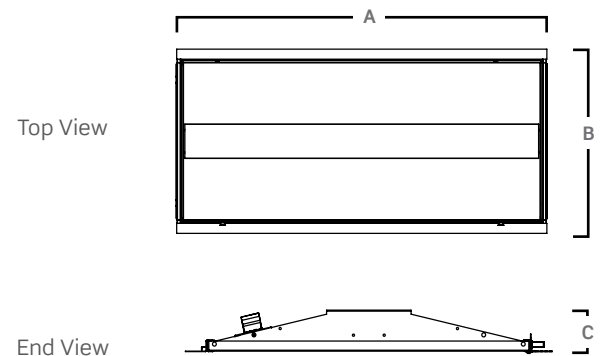
Approvals

- Approved to CSA/UL standards. UL listed for insulated ceilings.
- Tested in accordance to IESNA LM-79.
- Suitable for damp locations.
- DesignLights Consortium® Qualified.

All configurations may not be DLC qualified. Check www.designlights.org/QPL for qualified configurations.



Dimensions



| Size | A | B | C |
|------|---------|---------|--------|
| 1x4 | 47 7/8" | 11 7/8" | 2 1/2" |
| 2x2 | 23 7/8" | 23 7/8" | 2 1/2" |
| 2x4 | 47 7/8" | 23 7/8" | 2 1/2" |

Consult installation guide for exact dimensions.

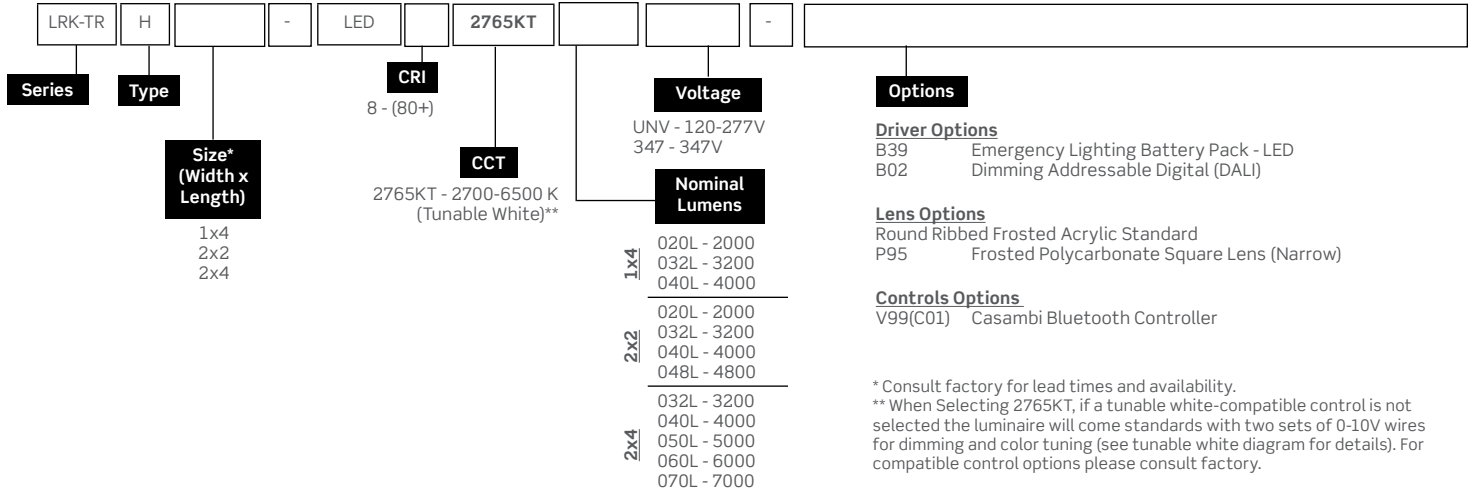
LRK-TRH - Tunable White

LED - Recessed Troffer Retrofit Kit - Type H

| | | |
|----------|--------------|-------|
| Project: | Catalogue #: | Type: |
| Notes: | | |

Order Key

EXAMPLE: LRK-TRH2x4-LED840K050LUNV



* Consult factory for lead times and availability.
 ** When Selecting 2765KT, if a tunable white-compatible control is not selected the luminaire will come standard with two sets of 0-10V wires for dimming and color tuning (see tunable white diagram for details). For compatible control options please consult factory.

Other options may be available, consult factory. Specifications and data subject to change without notice.

Performance Data

| LED Performance Data | | | | |
|----------------------|----------------|------------------|-------|-----------------|
| Size | Nominal Lumens | Delivered Lumens | Watts | Lumens Per Watt |
| 1x4 | 2000 | 2037 | 13.4 | 152 |
| | 3200 | 3107 | 21.2 | 146.9 |
| | 4000 | 3968 | 27.8 | 142.8 |
| 2x2 | 2000 | 2047 | 13.2 | 155.6 |
| | 3200 | 3250 | 21.7 | 149.9 |
| | 4000 | 4058 | 27.8 | 146 |
| | 4800 | 4808 | 33.7 | 142.5 |
| 2x4 | 3200 | 3239 | 21.2 | 153.1 |
| | 4000 | 4135 | 27.8 | 148.8 |
| | 5000 | 5172 | 35.9 | 144 |
| | 6000 | 5987 | 40.4 | 148.2 |
| | 7000 | 7348 | 51.2 | 143.6 |

Values based on 840K with standard lens at 25C

Performance Scaling Factor

| | 50K | 40K | 35K | 30K |
|-------|-------|-------|-------|-------|
| 80CRI | 1.000 | 1.000 | 0.960 | 0.946 |
| 90CRI | 0.875 | 0.875 | 0.836 | 0.809 |

Tunable White

When Selecting 2765KT, if a tunable white-compatible control is not selected the luminaire will come standard with two sets of 0-10V wires for dimming and color tuning. For compatible control options please consult factory.

Dim and CCT control wire colors are subject to change without notice. All control wires are marked per the parentheses.

